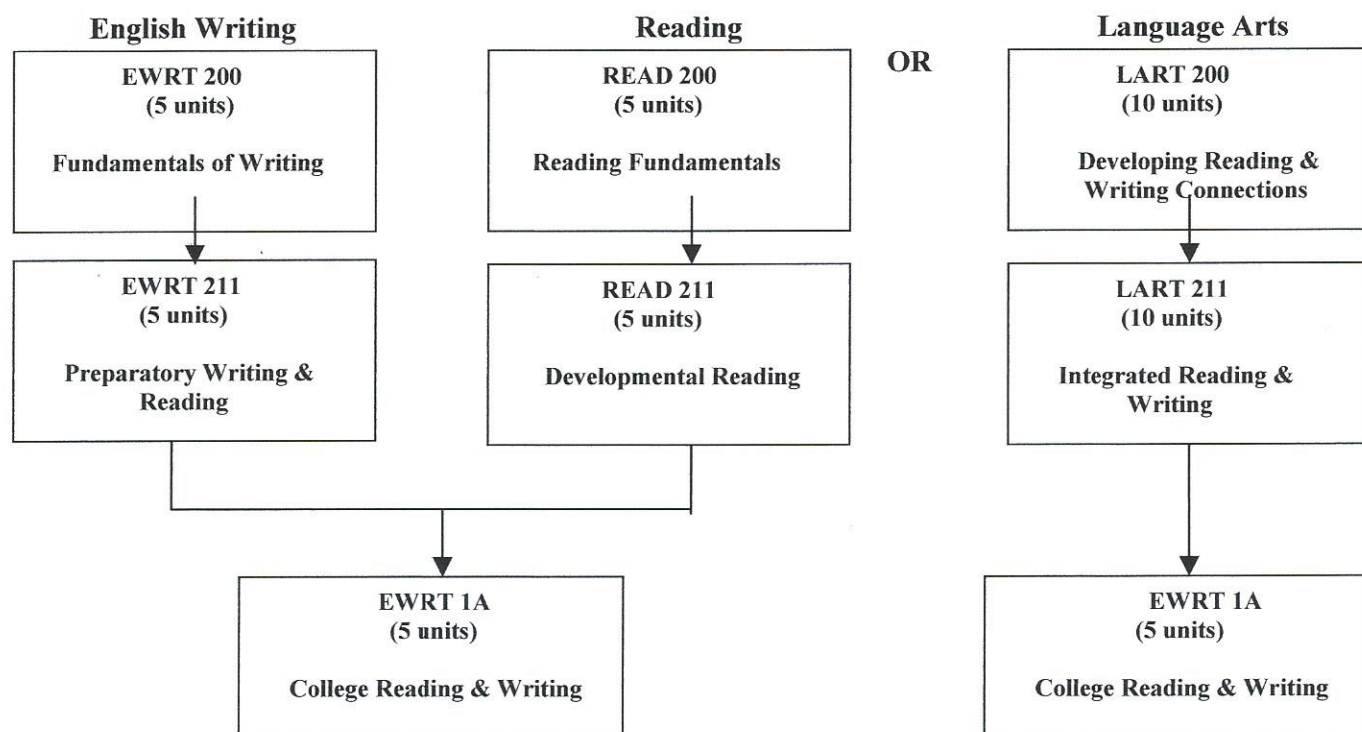


# English Placement Test And Course Sequence

The English Placement Test provides placement into 3 levels of Reading and Writing courses. Students who are assigned Reading and Writing courses before College EWRT 1A level must complete **all writing and reading courses** in their sequence to be eligible to enroll in College Level Writing EWRT 1A. Language Arts courses fulfill both writing and reading courses at each level.

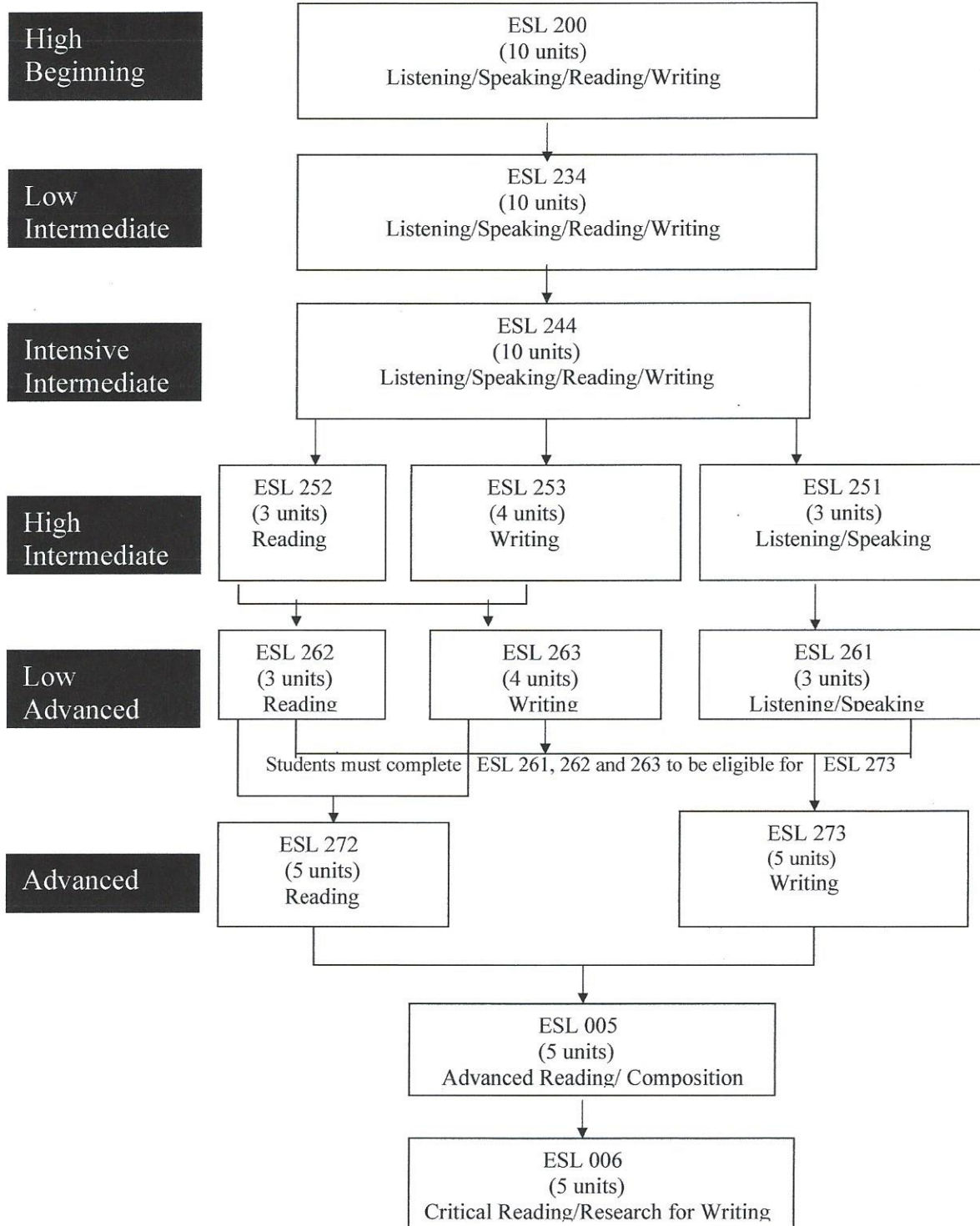


Lower levels need to be completed, either by coursework or placement, before students can move to next level.

*For Nonnative Speakers*

# English As a Second Language Course Sequence

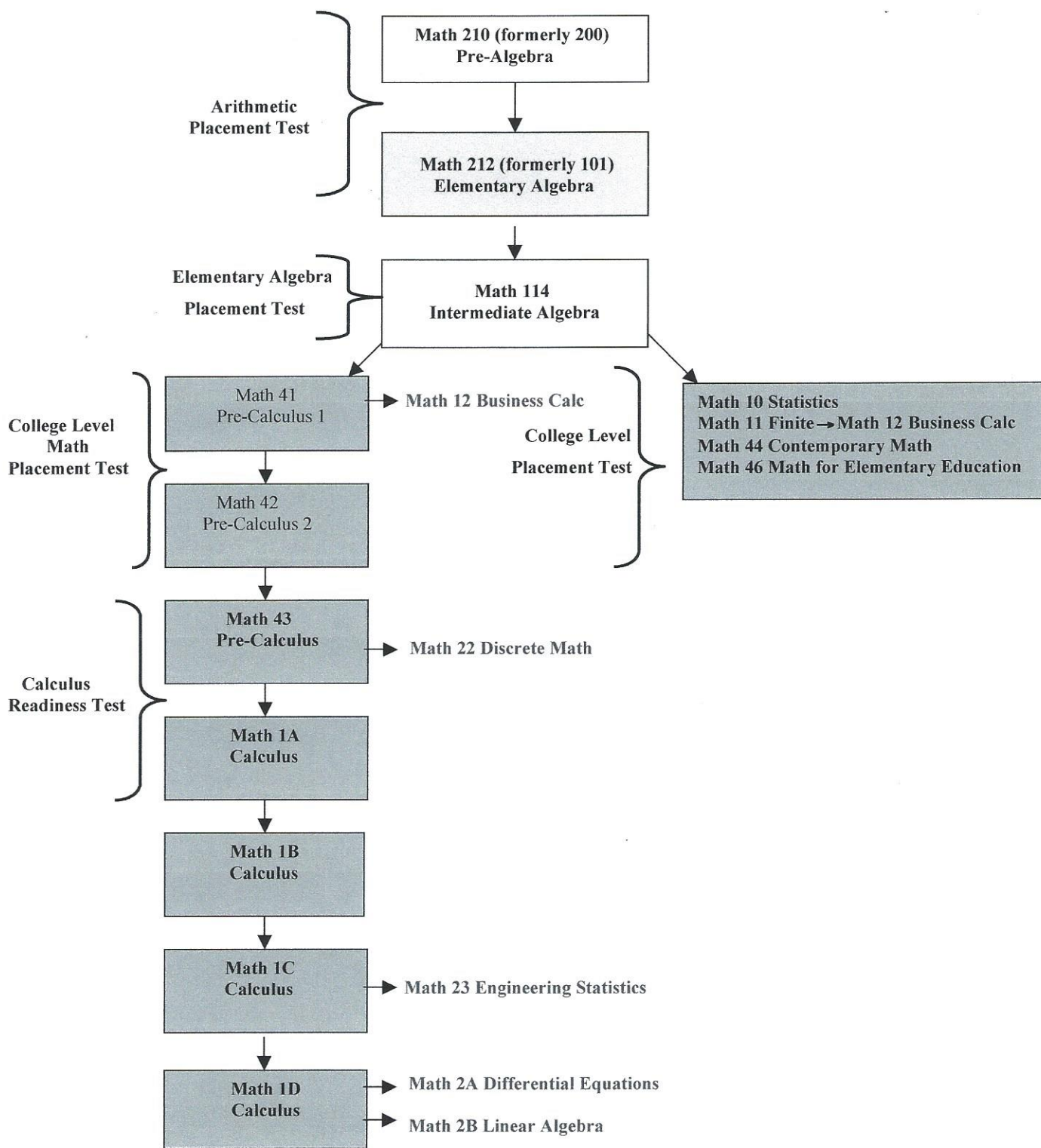
Students who need beginning level ESL are advised to enroll in an Adult Education program.



Lower levels need to be completed, either by coursework or placement, before students can move to next level.

# Math Placement Tests And Math Course Sequence

There are four different Math Placement Tests: Arithmetic, Elementary Algebra, College Level Math and Calculus Readiness. Each test covers different level skills and provides different course placements. College Board AP Calculus exams may be used.\*



Advanced Placement Scores for Calculus of 3 or higher can be submitted for placement.  
See [www.deanza.edu/admissions/placement/prerequisites/clearanceform.html](http://www.deanza.edu/admissions/placement/prerequisites/clearanceform.html).

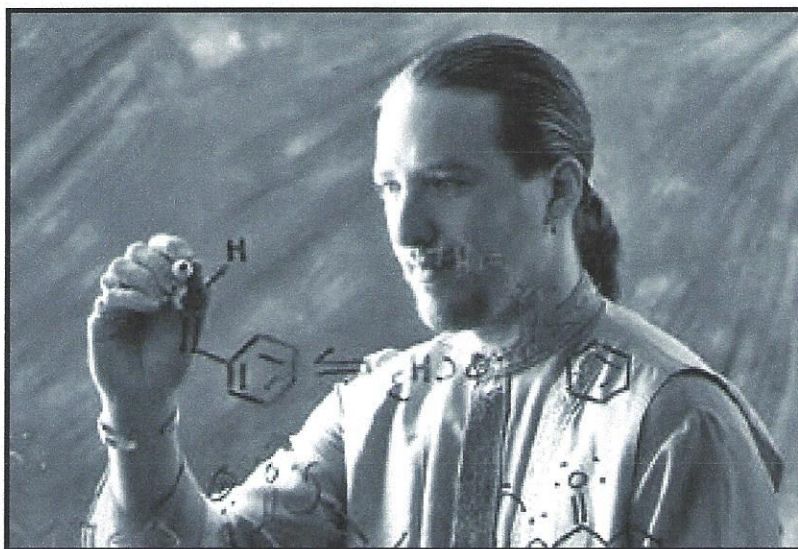


For Science/Engineering Majors

# Chemistry Course Sequence

Passing score on chemistry placement test **AND** college level intermediate algebra class. Bring transcript proof to the Assesment Office.

**OR**



**CHEM 50**  
(5 units)

**CHEM 1A**  
(5 units)

**CHEM 1B**  
(5 units)

**CHEM 1C**  
(5 units)

**CHEM 12A, B, C**  
(5 units each)

## Chemistry Placement Test

This test clears students into Chemistry 1A and/or Biology 6A.

## Placement into General Chemistry 1A is based on the following:

- ◆ Qualifying score on the chemistry placement test, **AND**
- ◆ Completion of a college-level intermediate algebra course with a grade of "C" or better, **OR**
- ◆ Completion of CHEM 50

Note: Completion of CHEM 1A or College Board AP exam score of 3 places into CHEM 1B.  
College Board AP exam score of 4 or higher places into CHEM 1C.

## Placement into BIOL 6A is based on the following:

- ◆ Qualifying score on the chemistry placement test or completion of CHEM 50 or CHEM 1A

## Placement into BIOL 40A is based on the following:

- ◆ Qualifying score on the BIOL 40A test or completion of CHEM 50, CHEM 1A or CHEM 30A