

Algebra of Functions

Name: _____

DIRECTIONS Give complete solutions to the following problems be sure to provide all the necessary steps to support your answers.

1. $f = \{(1, 2), (2, 3), (3, 3)\}, g = \{(1, 0), (2, 3), (3, 2), (4, 8)\}$

a) Find $(f + g)(2) =$ Ans _____

b) Find the domain of $f + g$ Ans _____

c) Find the domain of $\frac{f}{g}$ Ans _____

d) Find the range of $f + g$ Ans _____

e) Find the range of $\frac{f}{g}$ Ans _____

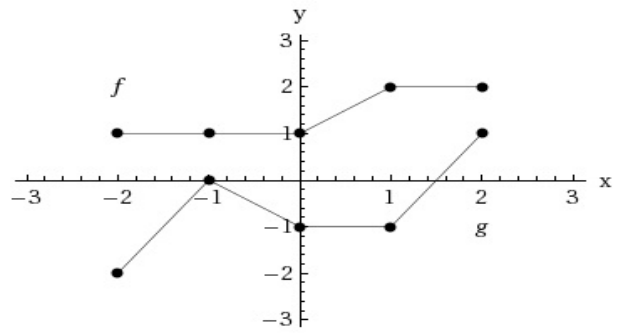
2. Let $f(x) = x^2, g(x) = 2x - 3$

a) Find $(f + g)(2) =$ Ans _____

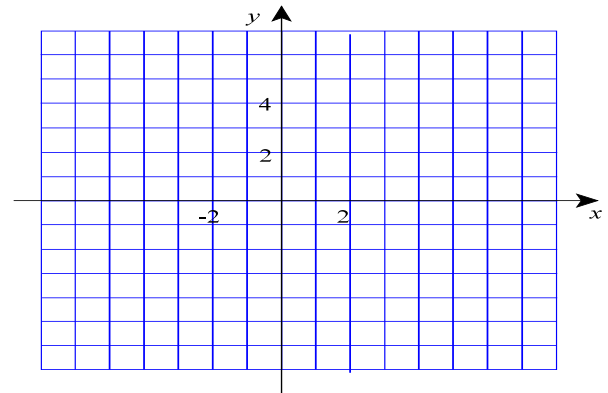
b) Find $(f + g)(x)$ Ans _____

c) Find $\left(\frac{f}{g}\right)(x)$ Ans _____

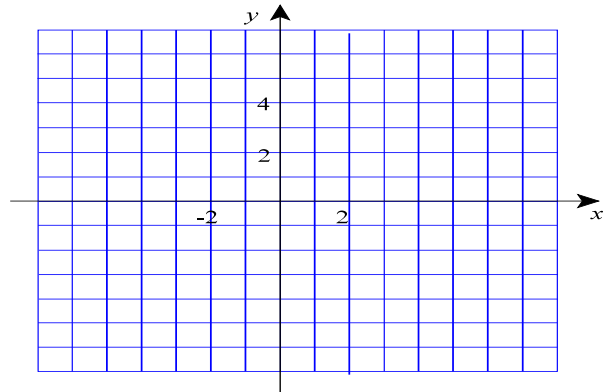
3. The graphs of f and g are shown above.



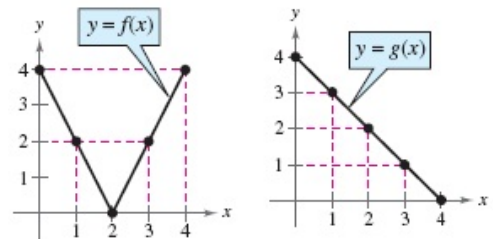
- a. Produce the graphs of $f + g$



- b. Produce the graphs of $f - g$



5. Use the graphs of f and g to find



- a. Find an expression for $y = f(x)$

Ans _____

- b. Find an expression for $y = g(x)$

Ans _____