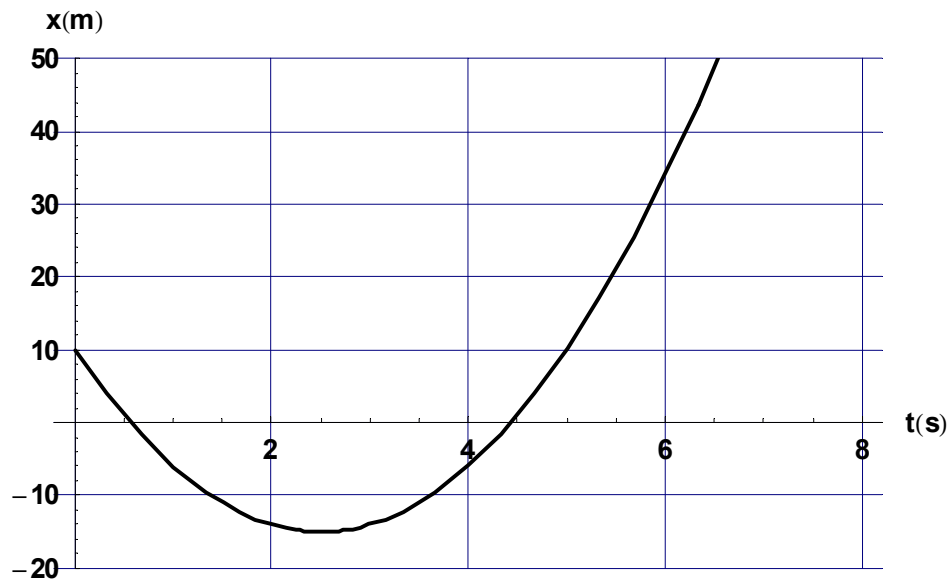


Example

Consider the following x vs. t graph for the motion of a particle moving along the x -axis.



a) Find the average velocity in the time interval $(2,5)$

b) Find the velocity at $t=4$ s.

c) In what direction is the particle moving at $t=1$ s? At $t = 5$ s?

d) When is the velocity zero?

e) When does the particle change direction?