

Unit 1: Paleolithic Art part 3

Announcements:

- field trip forms
- panel project on Tuesday
 - wear clothes that can get dirty
- Art on Campus Assignment
- Article links posted

Unit 1:

Rarities in cave art

Introduction to Paleolithic art panel project

class exercise – memory sketch

drawing techniques



Unit 1 lecture concepts

Hunter/Gatherers:

characteristics of early hominid groups

Paleolithic Ice age:



Age of Innovation and adaptation

environmental conditions affecting humans

Paleolithic extinctions in the new world

3 European Caves:

description of caves and artwork they contain

Animal rarities:

Cave crisis:

What is affecting the cave sites today and what are we doing to save them.

Unit 1 assignments

- **Connections concept map** – Prehistoric era
- **Video write up** – *Ice Age Bay Area*
 - $\frac{3}{4}$ of a page describing the bay area region 10,000 years ago as presented in video.
- **Video write up** – *Lascaux Cave Virtual tour*
 - $\frac{1}{2}$ page on your impressions of the caves and what theory stated in the lecture you believe is most valid.
- **Prehistoric Animal Group work-** Group Art Session #1
 - SRC research notes
 - Your image on the cave painting panel
 - Group board work notes
- **Earth Map update**

Unit #1 : Art of the Paleolithic

Paleolithic

Cro-Magnon man

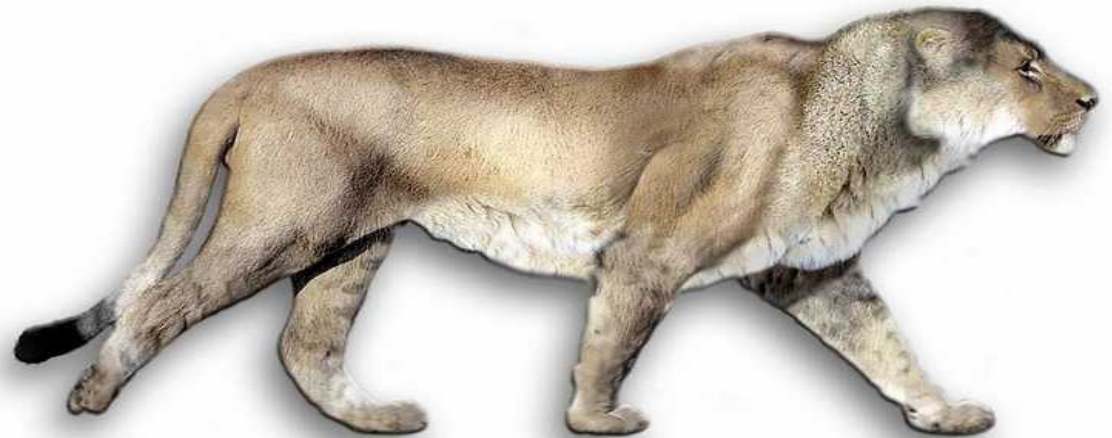
totemism

shamanism

anthropomorphic

Przewalski horse

Animal Rarities in cave art



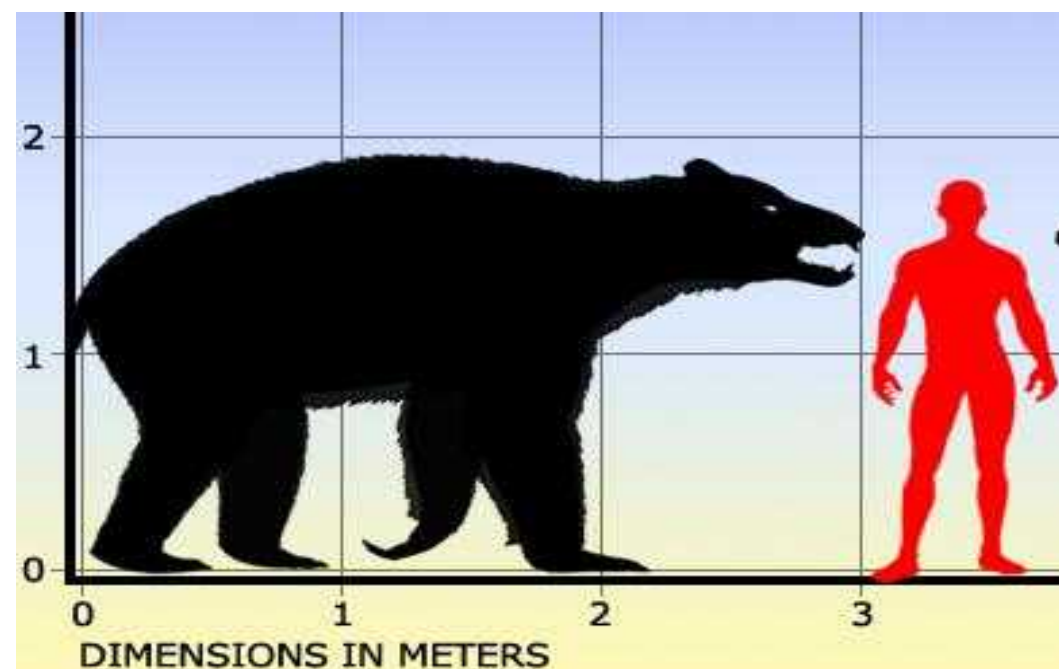
Cave Bear – *Ursus spelaeus*



CAVE BEAR

URSUS SPELAEUS

- 2200 lbs. (today's bears avg. 1100lbs)



CAVE BEAR

URSUS SPELAEUS

One of the first mega fauna
to go extinct- 27,800 years
ago

omnivores- limited food
resource

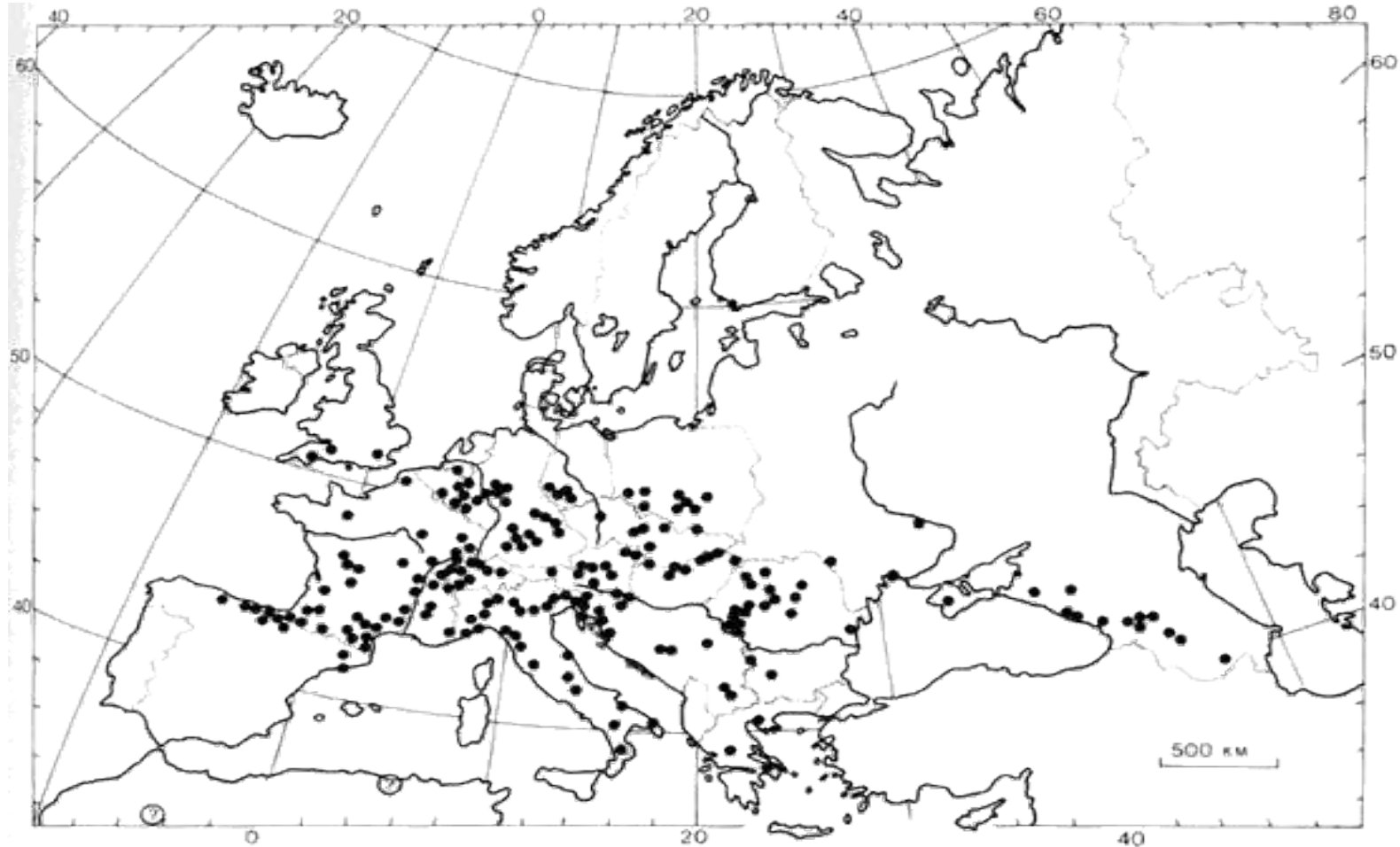
Limited range- just in Europe

Change in climate lead to
change in vegetation



CAVE BEAR

URSUS SPELAEUS



CAVE BEAR
URSUS SPELAEUS
Chauvet cave



CAVE BEAR

URSUS SPELAEUS



CAVE BEAR

URSUS SPELAEUS



CAVE BEAR

URSUS SPELAEUS



CAVE BEAR

URSUS SPELAEUS



Chauvet

190 fossilized skulls
found in the cave floor

Cave Bear Wallows



CAVE BEAR CULT

URSUS SPELAEUS



CAVE BEAR

URSUS SPELAEUS



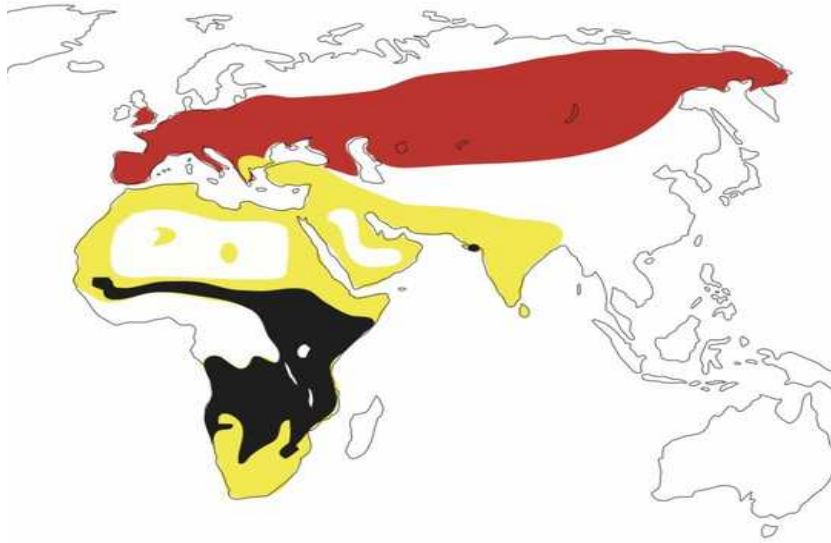
CAVE BEAR

URSUS SPELAEUS



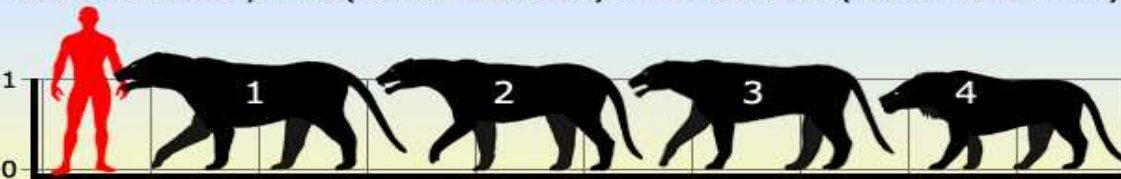
European Cave Lion

Panthera leo spelaea



Some prehistoric lions compared to a 1.8 meter tall person and a modern African lion

1 - *Panthera leo atrox* (American lion). 2 - *Panthera leo fossilis*.
3 - *Panthera leo spelaea* (Eurasian cave lion). 4 - *Panthera leo* (modern African lion).



DIMENSIONS IN METERS

© www.prehistoric-wildlife.com 20-05-2014

European Cave Lion

Panthera leo spelaea

- Extinct ~12,000 ya
- Reindeer and horses primary diet- carnivore
- Climate change
- Competition with humans for prey species



European Cave Lion

72 images of cave lions in Chauvet Cave alone



European Cave Lion

Panthera leo spelaea



European Cave Lion

Panthera leo spelaea



European Cave lion

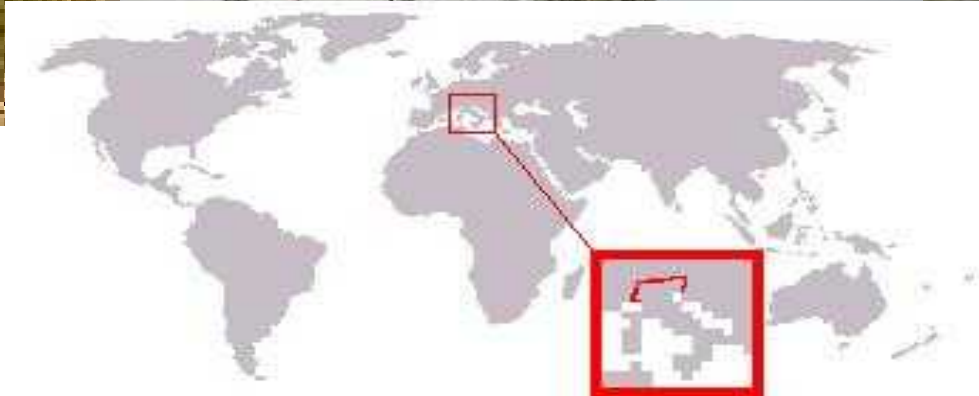


PALEOLITHIC RARITIES

Cave Leopard: *Panthera pardus spelaea*



TODAY'S IBEX (*CAPRA IBEX IBEX*)



PALEOLITHIC RARITIES

Alpine Ibex (*Capra ibex*)



PALEOLITHIC RARITIES

Alpine Ibex (*Capra ibex*) Niaux cave



PALEOLITHIC RARITIES

Alpine Ibex (*Capra ibex*) Lascaux cave



TODAY'S MUSK OX

(*Ovibos moschatus*)



PALEOLITHIC RARITIES

MUSK OX





TODAY'S MUSK OX
(*Ovibos moschatus*)



Cave Hyena

Corcuta corcuta spelaea

- Subspecies of the modern African species
- Extinct in Europe ~ 10,000 years ago
- Scavengers and predators– fed on horses mainly
- Lived in caves



Cave Hyena

Corcuta corcuta spelaea



Cave Hyena

Corcuta corcuta spelaea



Creeping hyena
Atlatl--mammoth ivory carving
12,000 – 17,000 years ago

Seals of Nerja , Spain

- Possibly the oldest representations of animals
- 43,000 to 42,000 years old
- Possibly painted by Neanderthals
- Seals- main food source along the coast of Spain

[Article](#) –

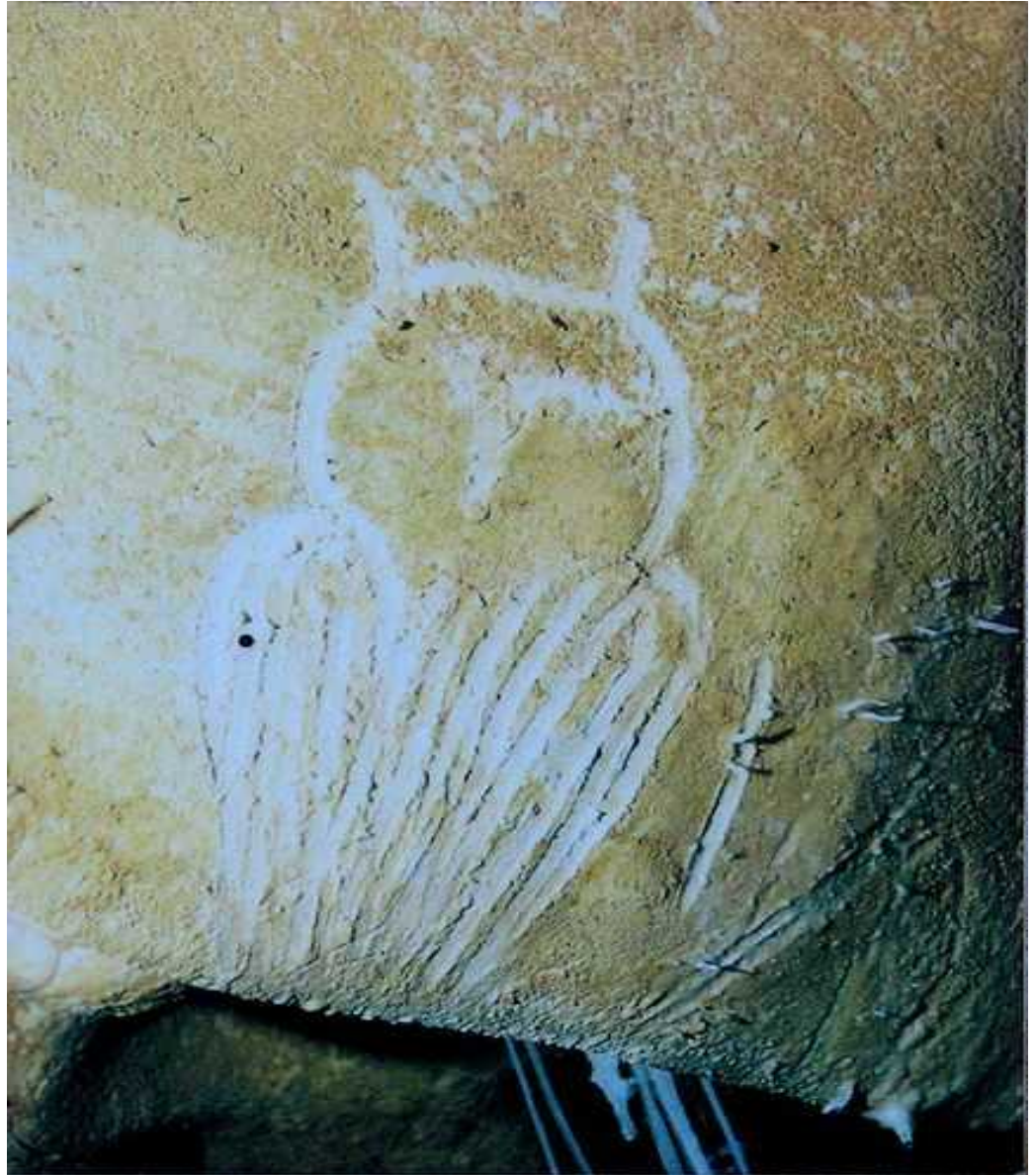
***Neanderthals, the World's First
Misunderstood Artists***



PALEOLITHIC RARITIES (SALMON)



Chauvet owl



ART of the EUROPEAN PALEOLITHIC

Human images are rare, but powerful. This human hand print, perhaps the artist's, some of the oldest images are stencil technique of hands

(El Castillo, Spain)



ART of the PALEOLITHIC



Lion Man – 40,000 years old
carved in ivory oldest effigy
found with human traits



Venus of Willendorf – Germany
32,000 years old, earliest
depiction of fertility goddess.



Stag Man (the
Sorcerer) rock art
redrawn. 15,000
years old France
red deer antler
headdress

ART of the EUROPEAN PALEOLITHIC



Flute-playing bison man



ART of the EUROPEAN PALEOLITHIC



Found Czechoslovakia in 1891 by an amateur
archeologist

Carving in ivory, multiple views 26,000 years old

Depictions of female forms



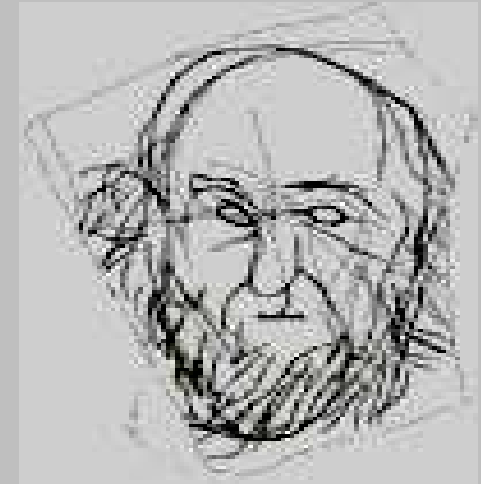
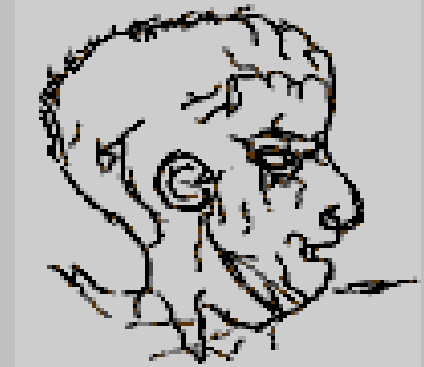
Oldest known depiction of women's face
25,000 years old
Mammoth ivory carving



Venus of Willendorf, Austria
Limestone carving
32,000 years

ART of the EUROPEAN PALEOLITHIC

**From Le
Marche come
these “quick
sketches”
engraved on
stone slabs
approximately
15 kya.**



ART of the EUROPEAN PALEOLITHIC



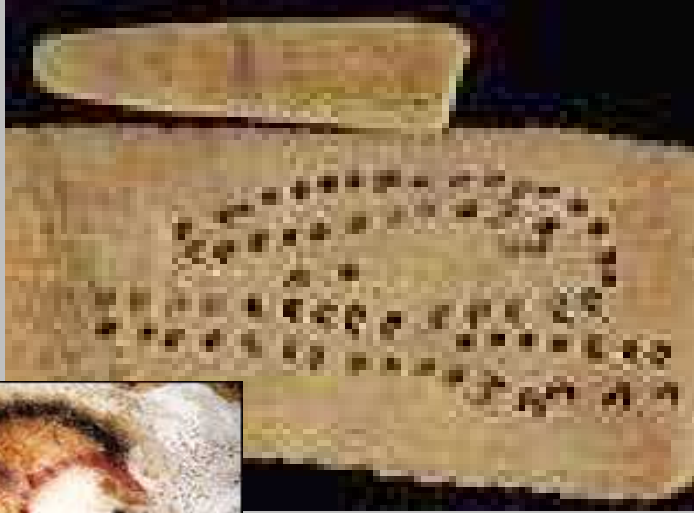
**Teeth
ornaments
from Grotte
Gazel, 15 kya.
Left to right:
Deer incisor;
hare incisor;
fox canine; elk
tooth.**

ART of the EUROPEAN PALEOLITHIC

**In the soft mud of a few caves,
footprints were left behind!**



ART of the EUROPEAN PALEOLITHIC



Some possibly could have astronomical significance
The incised symbols on this bone may represent the phases of the moon.



Some painted dots were thought to show Pleiades (middle) and the lunar count (bottom)



ART of the PALEOLITHIC

Here is a small stone lamp, used to light the cave walls when the artists worked on their amazing images.

(Lascaux, France)



Animals of Paleolithic Art project

