

De Anza College Office of Institutional Research and Planning

To: Clara Lam, ESL Department Chair

From: Mallory Newell, De Anza Researcher

Date: 4/29/2016

Subject: Information on ESL Course Sequences to Inform Multiple Measures Assessment

This report includes students who placed into ESL courses and tracks their progress to completing ESL5/6 or EWRT1A. Students are tracked over a 6-year period to ensure they have ample time to complete the sequence. If they complete within any time frame prior to 6 years, they are included in the data. The time frame is any student who enrolled in the first course in the sequence in Fall 2009 and completed by Spring 2015. The analysis includes ESL Writing, Reading, Listening and Integrated courses. Data for this report was compiled from the Chancellor's Office Basic Skills Progress Tracker tool: http://datamart.cccco.edu/Outcomes/BasicSkills_Cohort_Tracker.aspx

The ESL sequence ranges from courses starting at 6 levels below college level to just two levels below college level. A description of the levels is included in the Appendix and can be accessed here: <http://www.deanza.edu/admissions/placement/pdf/esl-sequence.pdf>

ESL Writing

Table 1. ESL253 – Starting Three Levels Below College Level

Fall 2009 to Spring 2015 - 6 Years							
ESL253		ESL263/EWRT200		ESL273/EWRT211*		EWRT1A**	
# Starting in 253	178	# Continuing to 263/200	129	# Continuing to 273/211	91	# Continuing to 1A	83
# Success	158	# Success	117	# Success	86	# Success	78
% Success	89%	% Success	91%	% Success	95%	% Success	94%
		% Continued from 253 to 263/200	72%	% Continued from 253 to 273/211	51%	% Continued from 253 to 1A	47%
		% Complete next level	66%	% Complete next level	48%	% Complete next level	44%
* Also includes ESL274, EWRT274, LART212; ** No students in the cohort enrolled in ESL5/6							

- 44% of students who started at three levels below in ESL Writing completed the sequence by successfully passing EWRT1A.

Table 2. ESL263 – Starting Two Levels Below College Level

Fall 2009 to Spring 2015 - 6 Years					
ESL263		ESL273/EWRT211*		EWRT1A**	
# Starting in 263	93	# Continuing to 273/211	64	# Continuing to 1A	40
# Success	82	# Success	60	# Success	39
% Success	88%	% Success	94%	% Success	98%
		% Continued from 263 to 273/211	69%	% Continued from 263 to 1A	43%
		% Complete next level	65%	% Complete next level	42%
* Also include ESL274, EWRT274; ** No students in the cohort enrolled in ESL5/6					

- 42% of students who started at two levels below college level in ESL Writing completed the sequence by completing EWRT1A.

Table 3. ESL273 – Starting One Level Below College Level

Fall 2009 to Spring 2015 - 6 Years			
ESL273		EWRT1A*	
# Starting in 273	17	# Continuing to 1A	7
# Success	13	# Success	7
% Success	76%	% Success	100%
		% Continued from 273 to 1A	41%
		% Complete next level	41%
* No students in the cohort enrolled in ESL5/6			

- 41% of students who started at one level below in ESL Writing completed the sequence by successfully passing EWRT1A.

ESL Reading

Table 4. ESL252 – Starting Three Levels Below College Level

Fall 2009 to Spring 2015 - 6 Years							
ESL252		ESL262/EWRT200		ESL272/EWRT211*		EWRT1A**	
# Starting in 252	168	# Continuing to 262/200	118	# Continuing to 272/211	96	# Continuing to 1A	66
# Success	144	# Success	105	# Success	92	# Success	64
% Success	86%	% Success	89%	% Success	96%	% Success	97%
		% Continued from 252 to 262/200	70%	% Continued from 252 to 272/211	57%	% Continued from 252 to 1A	39%
		% Complete next level	63%	% Complete next level	55%	% Complete next level	38%

* Also includes LART211, LART212; ** No students in the cohort enrolled in ESL5/6

- 38% of students who started at three levels below in ESL Reading completed the sequence by successfully passing EWRT1A.

Table 5. ESL262 – Starting Two Levels Below College Level

Fall 2009 to Spring 2015 - 6 Years					
ESL262		ESL272/EWRT211*		EWRT1A**	
# Starting in 262	92	# Continuing to 272/211	59	# Continuing to 1A	43
# Success	80	# Success	65	# Success	41
% Success	87%	% Success	110%	% Success	95%
		% Continued from 262 to 272/211	64%	% Continued from 262 to 1A	47%
		% Complete next level	71%	% Complete next level	45%

* Also includes LART211, LART212; ** No students in the cohort enrolled in ESL5/6

- 45% of students who started at two levels below in ESL Reading completed the sequence by successfully passing EWRT1A.

Table 6. ESL272 – Starting One Level Below College Level

Fall 2009 to Spring 2015 - 6 Years			
ESL272		EWRT1A*	
# Starting in 272	27	# Continuing to 1A	15
# Success	23	# Success	15
% Success	85%	% Success	100%
		% Continued from 272 to 1A	56%
		% Complete next level	56%
* No students in the cohort enrolled in ESL5/6			

- 56% of students who started at one level below in ESL Reading completed the sequence by successfully passing EWRT1A.

ESL Listening

Table 7. ESL251 – Starting Three Levels Below College Level

Fall 2009 to Spring 2015 - 6 Years							
ESL251/260		ESL261/EWRT200*		EWRT211*		EWRT1A**	
# Starting in 251/260	163	# Continuing to 261/200	112	# Continuing to 211	28	# Continuing to 1A	76
# Success	145	# Success	102	# Success	28	# Success	73
% Success	89%	% Success	91%	% Success	100%	% Success	96%
		% Continued from 251/260 to 261/200	69%	% Continued from 251/260 to 211	17%	% Continued from 251/260 to 1A	47%
		% Complete next level	63%	% Complete next level	17%	% Complete next level	45%
* Also includes LART200; ** Also includes LART211, LART212; ***No students in the cohort enrolled in ESL5/6							

- 45% of students who started at three levels below in ESL Listening completed the sequence by successfully passing EWRT1A.

Table 8. ESL261 – Starting Two Levels Below College Level

Fall 2009 to Spring 2015 - 6 Years					
ESL261		EWRT211		EWRT1A**	
# Starting in 261	67	# Continuing to 211	10	# Continuing to 1A	29
# Success	63	# Success	10	# Success	28
% Success	94%	% Success	100%	% Success	97%
		% Continued from 261 to 211	15%	% Continued from 261 to 1A	43%
		% Complete next level	15%	% Complete next level	42%

*No students in the cohort enrolled in ESL5/6

- 42% of students who started at two levels below in ESL Listening completed the sequence by successfully passing EWRT1A.
 - Note that no students in this cohort started at one level below for ESL Listening.

ESL Integrated

Table 9. ESL200 – Starting Six Levels Below College Level

Fall 2009 to Spring 2015 - 6 Years							
ESL200		ESL234		EWRT244		ESL5/6	
# Starting in 200	25	# Continuing to 234	21	# Continuing to 244	19	# Continuing to 1A	3
# Success	22	# Success	18	# Success	12	# Success	3
% Success	88%	% Success	86%	% Success	63%	% Success	100%
		% Continued from 200 to 234	84%	% Continued from 200 to 244	76%	% Continued from 200 to 5/6	12%
		% Complete next level	72%	% Complete next level	48%	% Complete next level	12%

*No students in the cohort enrolled in EWRT1A; No students in the cohort enrolled in all 6 levels

- 12% of students who started at six levels below in ESL Integrated completed the sequence by successfully passing ESL5 or ESL 6.

Table 10. ESL234 – Starting Five Levels Below College Level

Fall 2009 to Spring 2015 - 6 Years									
ESL234		EWRT244		EWRT200/LART200		EWRT211/LART212		ESL5/6/EWRT1A	
# Starting in 234	67	# Continuing to 244	49	# Continuing to 1A	2	# Continuing to 211/212	2	# Continuing to 1A/5/6	25
# Success	57	# Success	45	# Success	2	# Success	2	# Success	20
% Success	85%	% Success	92%	% Success	100%	% Success	100%	% Success	80%
		% Continued from 234 to 244	73%	% Continued from 234 to 200	3%	% Continued from 234 to 211/212	3%	% Continued from 234 to 5/6/1A	37%
		% Complete next level	67%	% Complete next level	3%	% Complete next level	3%	% Complete next level	30%
*No students in the cohort enrolled in ESL5/6; No students in the cohort completed the									

- 30% of students who started at five levels below in ESL Integrated completed the sequence by successfully passing ESL5 or ESL 6.

Table 11. ESL244 – Starting Four Levels Below College Level

Fall 2009 to Spring 2015 - 6 Years					
ESL244		EWRT211		ESL5/6/EWRT1A	
# Starting in 244	71	# Continuing to 211	2	# Continuing to 5/6/1A	57
# Success	68	# Success	2	# Success	53
% Success	96%	% Success	100%	% Success	93%
		% Continued from 244 to 211	3%	% Continued from 244 to 5/6/1A	80%
		% Complete next level	3%	% Complete next level	75%
* No students in the cohort enrolled in ESL5/6; No students in the cohort enrolled in the 3 or 2 levels below course					

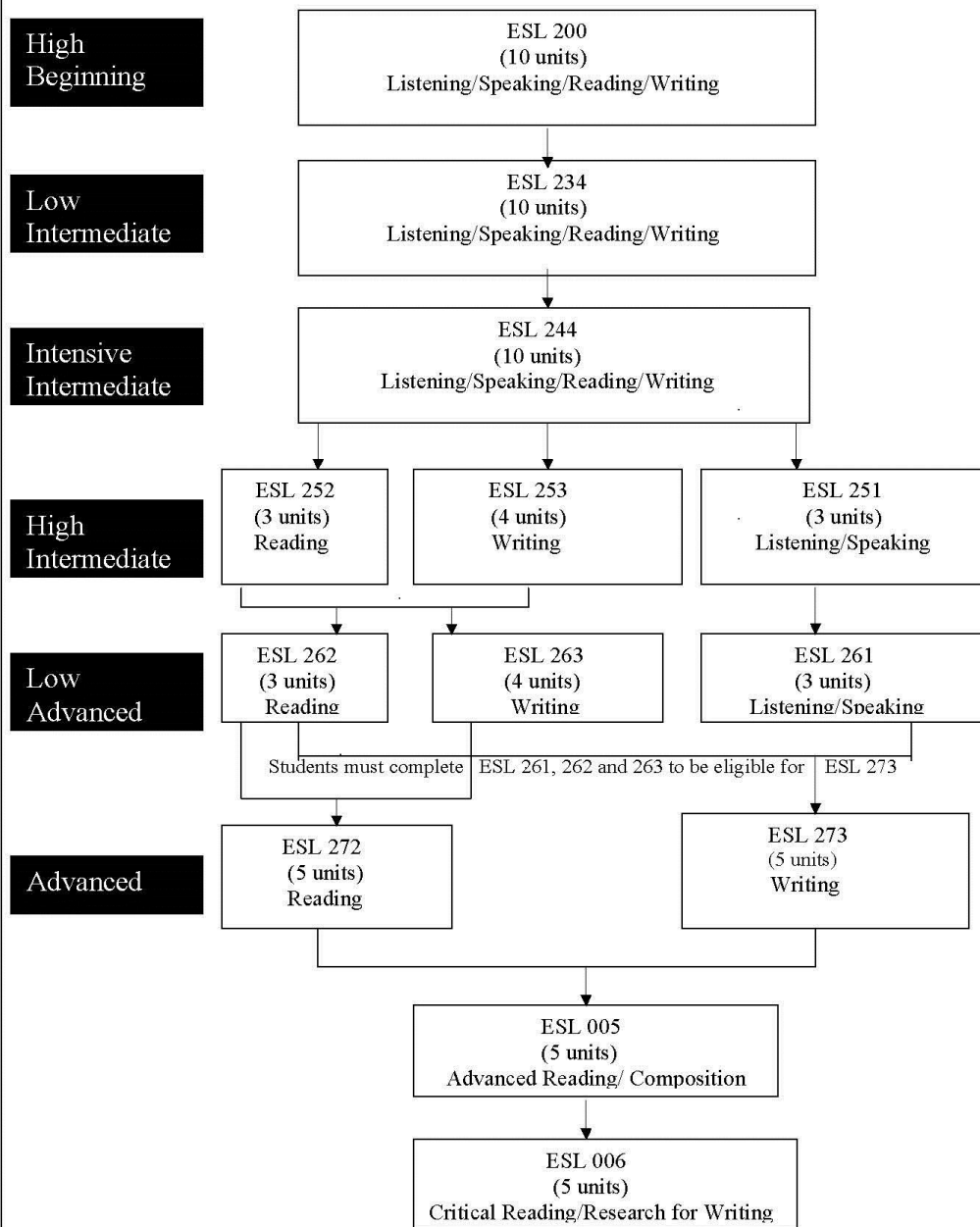
- 75% of students who started at four levels below in ESL Integrated completed the sequence by successfully passing ESL5 or ESL 6 or EWRT1A.
 - However, students who started at four levels went directly into the one level below course in EWRT rather than completing the full sequence.

Appendix

REVISED 04/2012

ENGLISH AS SECOND LANGUAGE COURSE SEQUENCE

Students who need beginning level ESL are advised to enroll in an Adult Education program.



Lower levels (starting at ESL 200) need to be completed, either by coursework or placement before students can move to next level. Students must complete ESL 261, 262 and 263 to be eligible for ESL 273.