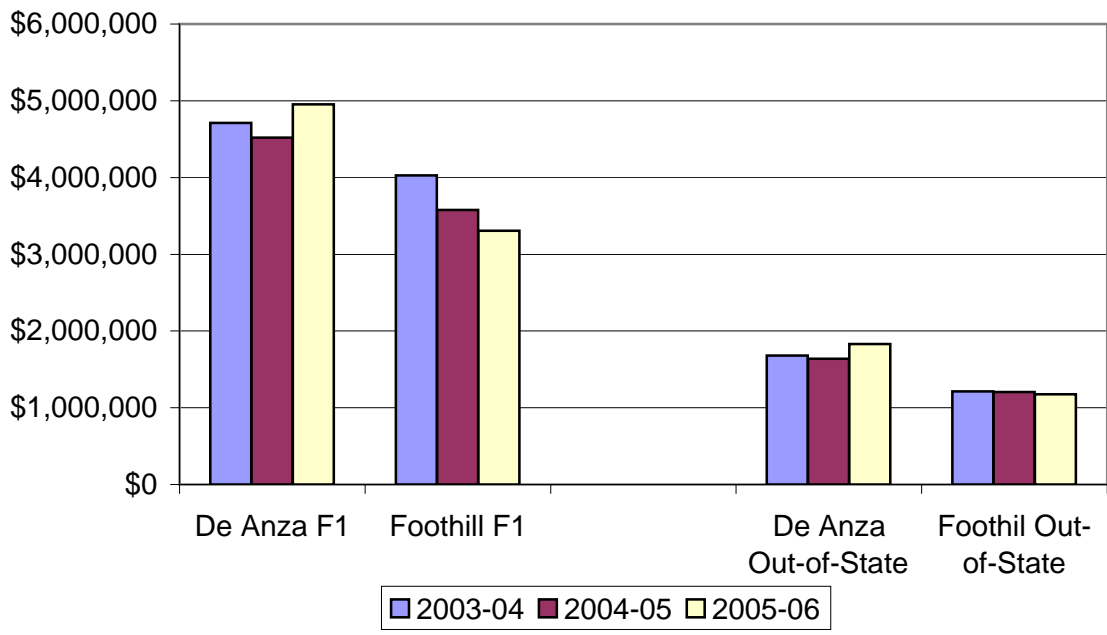


**FHDA Estimated NonResident Tuition Charged
F1 and Out of State Students, 2003-04 to 2005-06**



**FHDA Estimated NonResident Tuition 2003-04 to 2005-06
Grouped by Visa Status at Census**

DRAFT

College	Group	2003-04			2004-05			2005-06*			3yr Chg
		NonResident Tuition	% of NonR	% of District	NonResident Tuition	% of NonR	% of District	NonResident Tuition	% of NonR	% of District	
De Anza	F1 and FZ	\$4,710,528	74%	54%	\$4,521,125	73%	56%	\$4,952,315	73%	60%	5%
	Out of State	\$1,681,325	26%	58%	\$1,639,966	27%	58%	\$1,831,179	27%	61%	9%
	NonResident Total	\$6,391,853	100%		\$6,161,091	100%		\$6,783,494	100%		6%
	FRS 6/32 Final:	\$6,441,788			\$6,125,195						
Foothill	F1 and FZ	\$4,027,042	77%	46%	\$3,578,223	75%	44%	\$3,304,610	74%	40%	-18%
	Out of State	\$1,212,567	23%	42%	\$1,205,652	25%	42%	\$1,177,901	26%	39%	-3%
	NonResident Total	\$5,239,608	100%		\$4,783,875	100%		\$4,482,511	100%		-14%
	FRS 6/32 Final:	\$5,353,817			\$4,792,500						
District	F1 and FZ	\$8,737,570	75%		\$8,099,348	74%		\$8,256,925	73%		-6%
	Out of State	\$2,893,892	25%		\$2,845,618	26%		\$3,009,080	27%		4%
	NonResident Total	\$11,631,461	100%		\$10,944,966	100%		\$11,266,005	100%		-3%
	FRS 6/32 Final:	\$11,795,605			\$10,917,695						**

Methodology: Visa status group derived from RDB Census Student Extract by Term. Students with a F1 and FZ Visa Code are included. Note, it is possible for students to have more than one visa code over the four quarters. The resulting file is merged with the student billing file for the subcode 13001 - NonResident Tuition. Charges are summed over the four quarters for the one subcode. In this analysis, out of state nonresidents are students with no visa code but with a billing subcode of 13001.

* 2005-06 calculated by summing the quarterly estimates.

** NonResident tuition increased approximately 2% over the period.

May 26, 2005, De Anza Research

c:\lamanque\international\tuition track\FY 05-06 Tuition Estimate rev 2.xls