

**De Anza College Estimated FTES Trend 2004-05, 2005-06, 2006-07, 2007-08**

De Anza College 2007-08 Resident FTES Estimate based on Summer, Fall 2007 and Estimated Winter 2008.

**Assumes:** 1) Job Corps will increase 4% in Spring over the previous year.

2) Local student FTES will increase 4% in Spring 2008 over the previous year.

If these assumptions hold, De Anza College will exceed the 2005-06 De Anza base by about 1%.

(NOTE: Winter FTES estimated by applying the percentage change in WSCH year to year to the winter 2007 FTES figure).

**DRAFT**

		Two Year						Percent of Total				
		2004-05	2005-06	2006-07	2007-08	Chg	% Chg	2004-05	2005-06	2006-07	2007-08	
F Visa Holders	Summer	102	103	131	145	14	10.7%	4.0%	3.9%	4.5%	5.4%	F Visa Holders represent about 75-80% of nonresident FTES. Their FTES increased by more than 20% in 2006-07, and they now make up about 9% of total De Anza enrollment.
	Fall	386	404	489	559	70	14.3%	6.2%	6.3%	7.5%	8.2%	
	Winter	395	435	526	594	68	13.0%	6.7%	7.0%	8.7%	9.4%	
	Spring	421	456	546	617	71	13.0%	7.4%	7.6%	9.3%	10.1%	
	SubTotal	1,304	1,398	1,692	1,915	223	13.2%	6.4%	6.6%	7.9%	8.7%	
Out-of-State	Summer	43	42	46	51	5	10.9%	1.7%	1.6%	1.6%	1.9%	
	Fall	105	132	144	145	1	0.7%	1.7%	2.1%	2.2%	2.1%	
	Winter	98	119	133	122	-11	-8.0%	1.7%	1.9%	2.2%	1.9%	
	Spring	94	106	120	120	0	0.0%	1.7%	1.8%	2.1%	2.0%	
	SubTotal	340	399	443	438	-5	-1.0%	1.7%	1.9%	2.1%	2.0%	
NonResidents	Total	1,644	1,797	2,135	2,354	219	10.2%	8.1%	8.5%	10.0%	10.7%	
Job Corps	Summer	283	383	757	398	-359	-47.4%	11.0%	14.4%	25.8%	14.8%	Job Corps enrollment did not decline significantly until Winter 2007 and still accounts for about 10% of campus FTES. Local student enrollment was essentially flat for the year.
	Fall	238	560	536	635	99	18.5%	3.8%	8.8%	8.3%	9.3%	
	Winter	357	831	540	560	20	3.7%	6.1%	13.4%	9.0%	8.9%	
	Spring	319	884	561	583	22	4.0%	5.6%	14.7%	9.6%	9.5%	
	SubTotal	1,197	2,658	2,394	2,176	-218	-9.1%	5.9%	12.5%	11.2%	9.9%	
Local Students	Summer	2,141	2,129	1,998	2,100	102	5.1%	83.3%	80.1%	68.1%	78.0%	
	Fall	5,503	5,276	5,326	5,518	192	3.6%	88.3%	82.8%	82.0%	80.5%	
	Winter	5,024	4,821	4,825	5,029	204	4.2%	85.5%	77.7%	80.1%	79.8%	
	Spring	4,843	4,570	4,617	4,802	185	4.0%	85.3%	76.0%	79.0%	78.4%	
	SubTotal	17,511	16,796	16,766	17,449	683	4.1%	86.0%	79.0%	78.7%	79.4%	
Residents *	Total	18,708	19,454	19,160	19,625	465	2.4%	91.9%	91.5%	90.0%	89.3%	
		2007-08 compared to 2005-06					171	0.9%				
		<b>Percent of Total Resident</b>										
Resident Total	Summer	2,424	2,512	2,755	2,498	-257	-9.3%	13.0%	12.9%	14.4%	12.7%	
	Fall	5,741	5,836	5,862	6,153	291	5.0%	30.7%	30.0%	30.6%	31.4%	
	Winter	5,381	5,652	5,365	5,589	224	4.2%	28.8%	29.1%	28.0%	28.5%	
	Spring	5,162	5,454	5,178	5,385	207	4.0%	27.6%	28.0%	27.0%	27.4%	
		<b>Percent of Total</b>										
Total	Summer	2,569	2,657	2,932	2,694	-238	-8.1%	12.6%	12.5%	13.8%	12.3%	
	Fall	6,232	6,372	6,495	6,857	362	5.6%	30.6%	30.0%	30.5%	31.2%	
	Winter	5,874	6,206	6,024	6,306	282	4.7%	28.9%	29.2%	28.3%	28.7%	
	Spring	5,677	6,016	5,844	6,122	278	4.8%	27.9%	28.3%	27.4%	27.9%	
De Anza Total		20,352	21,251	21,295	21,979	684	3.2%					

\* Note, actual resident FTES per Bernata Slater's Analysis of FTES for 2006-07 was 19,215 compared with 19,160 shown above. The difference of 55 FTES or .2% is likely due to the time of the extract and differences in rounding between the student and course level systems.

The above data aggregates individual student registration records, while the 320 report uses course level data with the FTES aggregated by SIS.

Source: District Research Data Warehouse Student Registration Table.  
Andrew LaManque, PhD, February 12, 2008

## Segmentation Analysis For Resident Student Persistence from Winter 2007 to Spring 2007 \* F1, Job Corps, K-12, and Life Long Learning Students Not Included

### Segmentation Analysis Defines Unique Groups of Students for Comparison - A Student is Included in Only One Group

**DRAFT**

Winter 2007 Group	Enrolled in Winter Did Not Return in Spring 2007		Persisted from Winter 2007 to Spring 2007		Total	
	HC	Percent	HC	Percent	HC	Percent

**Percent By Group**

About 75% of the students enrolled in Spring 2007 were continuing students from Winter 2007. Fulltime students had the highest persistence rate from winter to spring 2007, with 94% returning. In contrast, only 41% of Parttime students not receiving financial aid, that were new or returning in winter 2007 returned for the spring term.

Fulltime Student	263	6%	4,399	94%	4,662	100%
Less than Fulltime with Financial Aid	557	21%	2,131	79%	2,688	100%
Less than FT, No Aid, Continuing (from Fall)	1,581	28%	3,987	72%	5,568	100%
Less Than FT, No Aid, New or Returning (in Winter)	1,791	59%	1,247	41%	3,038	100%
Withdrew from all classes	1,072	66%	543	34%	1,615	100%
<b>Total</b>	<b>5,264</b>	<b>30%</b>	<b>12,307</b>	<b>70%</b>	<b>17,571</b>	<b>100%</b>

**Percent By Persistence**

Two groups of students accounted for more than 50% of the students enrolled in Winter not returning for Spring: 1) Parttime students with no financial aid that were new or returning and 2) students that Withdrew from classes after the 3rd week of the winter quarter (most of these students were taking only one class).

Fulltime Student	263	5%	4,399	36%	4,662	27%
Less than Fulltime with Financial Aid	557	11%	2,131	17%	2,688	15%
Less than FT, No Aid, Continuing (from Fall)	1,581	30%	3,987	32%	5,568	32%
Less Than FT, No Aid, New or Returning (in Winter)	1,791	34%	1,247	10%	3,038	17%
Withdrew from all classes	1,072	20%	543	4%	1,615	9%
<b>Total</b>	<b>5,264</b>	<b>100%</b>	<b>12,307</b>	<b>100%</b>	<b>17,571</b>	<b>100%</b>

Source: District Research Data Warehouse; End of Term.

Andrew LaManque, Ph.D

Feb 12, 2008

\* Using this methodology, student ethnicity, education goal, and prior education (eg. Bachelors, Masters, etc) did not appear to be significant factors.

## Estimated WSCH

RUN DATE: 23-Jan-08

### College Total

2007W  
01/23/07 06:05 AM
2008W  
01/23/08 06:05 AM

% Increase

	Sections	Unduplicated Headcount	Est Wsch	Sections	Unduplicated Headcount	Est Wsch	Sections	Unduplicated Headcount	Est Wsch
DA	<u>2,165</u>	<u>21,523</u>	<u>272,645</u>	<u>2,284</u>	<u>21,996</u>	<u>285,330</u>	<u>5.50%</u>	<u>2.20%</u>	<u>4.65%</u>

### By Division

	2007W				2008W				All Sections				
	2007W		2008W		2007W		2008W		2007W		2008W		
	Sec	Crse Enr	Est Wsch	Est FTES	Sec	Crse Enr	Est Wsch	Est FTES	FTEF	Est Prod	FTEF	Est Prod	
AS	102	5,753	29,986	667	111	5,948	30,939	688	AS	27.9	1,073	29.7	1,040
BH	171	3,778	22,543	501	194	4,130	23,864	530	BH	36.1	624	37.6	634
CA	233	4,314	19,236	428	239	4,272	19,314	429	CA	37.3	518	39.3	496
CB	237	6,035	29,562	657	236	6,293	31,818	707	CB	45.6	649	45.9	694
IC	157	3,049	15,666	348	177	3,158	16,348	363	IC	34.9	449	38.4	425
LA	516	10,140	45,940	1,021	526	10,920	49,667	1,104	LA	108.7	423	114.8	433
LB	3	32	64	1	3	39	78	2	LB	0.3	192	0.3	234
PE	169	3,710	10,865	242	172	3,739	11,234	250	PE	18.8	659	19.8	675
PS	206	7,202	40,053	890	218	7,339	40,686	904	PS	69.7	575	71.8	567
SE	53	1,160	10,923	243	53	1,168	11,054	246	SE	11.8	922	11.7	948
SS	291	10,192	44,286	984	328	10,818	47,010	1,045	SS	72.5	611	77.3	608
ST	27	1,010	3,523	78	27	939	3,319	74	ST	6.6	535	6.3	523
									Total	470.3	583	493.1	583

**Section Count includes only sections with registered students. FTEF and Productivity includes all sections.**

**Estimated WSCH****By Division**

RUN DATE: 23-Jan-08

		2007W	2008W	% Increase
AS	Estimated Wsch	29,986	30,939	3%
	Course Enrollment	5,753	5,948	3%
	Number of Sections	102	111	9%
	-			
BH	Estimated Wsch	22,543	23,864	6%
	Course Enrollment	3,778	4,130	9%
	Number of Sections	171	194	13%
	-			
CA	Estimated Wsch	19,236	19,314	0%
	Course Enrollment	4,314	4,272	-1%
	Number of Sections	233	239	3%
	-			
CB	Estimated Wsch	29,562	31,818	8%
	Course Enrollment	6,035	6,293	4%
	Number of Sections	237	236	-0%
	-			
IC	Estimated Wsch	15,666	16,348	4%
	Course Enrollment	3,049	3,158	4%
	Number of Sections	157	177	13%
	-			
LA	Estimated Wsch	45,940	49,667	8%
	Course Enrollment	10,140	10,920	8%
	Number of Sections	516	526	2%
	-			
LB	Estimated Wsch	64	78	22%
	Course Enrollment	32	39	22%
	Number of Sections	3	3	0%
	-			
PE	Estimated Wsch	10,865	11,234	3%
	Course Enrollment	3,710	3,739	1%
	Number of Sections	169	172	2%
	-			
PS	Estimated Wsch	40,053	40,686	2%
	Course Enrollment	7,202	7,339	2%
	Number of Sections	206	218	6%
	-			
SE	Estimated Wsch	10,923	11,054	1%
	Course Enrollment	1,160	1,168	1%
	Number of Sections	53	53	0%
	-			
SS	Estimated Wsch	44,286	47,010	6%
	Course Enrollment	10,192	10,818	6%
	Number of Sections	291	328	13%
	-			
ST	Estimated Wsch	3,523	3,319	-6%
	Course Enrollment	1,010	939	-7%
	Number of Sections	27	27	0%
	-			

### Estimated WSCH

### By Department

RUN DATE: 23-Jan-08

			2007W				2008W				Increase			
			01/23/07 06:05 AM				01/23/08 06:05 AM							
			Crse Enr	Est Wsch	Est FTES	Num Sec	Crse Enr	Est Wsch	Est FTES	Num Sec	Crse Enr	Est Wsch	Est FTES	Num Sec
DA	AS	APRN					1	9	0	1	1	9	0	1
		AUTO	679	3,980	88	33	670	3,986	89	33	-9	6	0	0
		MCNC	5,074	26,006	578	69	5,277	26,944	599	77	203	938	21	8
		Total	5,753	29,986	667	102	5,948	30,939	688	111	195	953	21	9
BH	BIOL	1,294	10,854	241	41	1,266	10,660	237	44	-28	-195	-4	3	
	COOP	143	508	11	15	158	534	12	16	15	26	1	1	
	E S	402	1,582	35	28	586	2,202	49	40	184	620	14	12	
	ESCI	268	2,008	45	10	346	2,505	56	15	78	497	11	5	
	HLTH	120	396	9	5	119	402	9	5	-1	7	0	0	
	HTEC	546	2,271	50	27	575	2,331	52	28	29	61	1	1	
	NURS	789	3,890	86	39	856	4,184	93	40	67	294	7	1	
	NUTR	216	1,035	23	6	224	1,047	23	6	8	12	0	0	
	Total	3,778	22,543	501	171	4,130	23,864	530	194	352	1,321	29	23	
	CA	ARTS	1,325	7,219	160	64	1,322	7,217	160	68	-3	-2	-0	4
DANC		509	1,250	28	28	453	1,262	28	26	-56	12	0	-2	
ELIT		3	12	0	1					-3	-12	-0	-1	
F/TV		934	4,123	92	47	989	4,349	97	55	55	227	5	8	
MUSI		1,090	4,347	97	68	1,058	4,313	96	64	-32	-34	-1	-4	
P E		19	46	1	3	12	24	1	3	-7	-22	-0	0	
PHTG		347	1,759	39	15	333	1,572	35	15	-14	-187	-4	0	
THEA		87	480	11	7	105	577	13	8	18	97	2	1	
Total		4,314	19,236	428	233	4,272	19,314	429	239	-42	79	2	6	
CB	ACCT	1,606	7,551	168	42	1,737	8,216	183	46	131	665	15	4	
	BUS	1,445	7,027	156	44	1,509	7,286	162	47	64	259	6	3	
	CAOS	1,261	4,514	100	78	1,274	5,029	112	72	13	515	11	-6	
	CDI	283	2,074	46	28	363	2,642	59	25	80	568	13	-3	
	CIS	1,012	6,684	149	35	1,149	7,601	169	39	137	917	20	4	
	REST	428	1,712	38	10	261	1,044	23	7	-167	-668	-15	-3	
	Total	6,035	29,562	657	237	6,293	31,818	707	236	258	2,256	50	-1	
	IC	ARBC	26	156	3	1	17	102	2	1	-9	-54	-1	0
ARTS		7	28	1	1	8	32	1	1	1	4	0	0	
CANT		23	138	3	1	28	168	4	1	5	30	1	0	
ELIT		9	36	1	1					-9	-36	-1	-1	
FREN		187	1,044	23	11	176	965	21	13	-11	-79	-2	2	
GERM		79	461	10	6	67	388	9	5	-12	-73	-2	-1	
HEBR						16	96	2	1	16	96	2	1	

		2007W				2008W				Increase			
		01/23/07 06:05 AM				01/23/08 06:05 AM							
		Crse Enr	Est Wsch	Est FTES	Num Sec	Crse Enr	Est Wsch	Est FTES	Num Sec	Crse Enr	Est Wsch	Est FTES	Num Sec
	HIST	27	108	2	1					-27	-108	-2	-1
	HNDI	15	90	2	1	28	168	4	1	13	78	2	0
	ICS	1,081	4,687	104	58	1,212	5,353	119	67	131	666	15	9
	INTL	251	1,168	26	13	215	1,002	22	14	-36	-166	-4	1
	ITAL	34	204	5	2	30	180	4	2	-4	-24	-1	0
	JAPN	309	1,794	40	12	327	1,911	42	11	18	117	3	-1
	KORE	55	330	7	2	57	342	8	5	2	12	0	3
	MAND	243	1,458	32	13	332	1,992	44	18	89	534	12	5
	PERS	49	294	7	4	51	306	7	4	2	12	0	0
	SPAN	529	3,010	67	24	488	2,773	62	27	-41	-237	-5	3
	URDU					11	66	1	1	11	66	1	1
	VIET	80	480	11	5	62	372	8	4	-18	-108	-2	-1
	WMST	45	180	4	1	33	132	3	1	-12	-48	-1	0
	Total	3,049	15,666	348	157	3,158	16,348	363	177	109	682	15	20
LA	ELIT	338	1,342	30	15	321	1,264	28	15	-17	-78	-2	0
	ESL	1,791	8,758	195	82	1,976	9,391	209	84	185	633	14	2
	EWRT	4,282	22,072	491	190	3,721	22,201	493	140	-561	130	3	-50
	JOUR	188	955	21	11	194	996	22	13	6	41	1	2
	LART	155	1,550	34	6	181	1,810	40	7	26	260	6	1
	LING	32	128	3	2	43	172	4	2	11	44	1	0
	LRNA	15	45	1	2	18	54	1	2	3	9	0	0
	RDNS	744	757	17	81	1,769	2,732	61	133	1,025	1,975	44	52
	READ	1,220	3,508	78	67	1,203	3,591	80	62	-17	83	2	-5
	SPCH	1,312	6,574	146	53	1,420	7,134	159	62	108	560	12	9
	TWRT	63	252	6	7	74	323	7	6	11	71	2	-1
	Total	10,140	45,940	1,021	516	10,920	49,667	1,104	526	780	3,727	83	10
LB	LCEN	32	64	1	3	39	78	2	3	7	14	0	0
	Total	32	64	1	3	39	78	2	3	7	14	0	0
PE	P E	3,710	10,865	242	169	3,739	11,234	250	172	29	369	8	3
	Total	3,710	10,865	242	169	3,739	11,234	250	172	29	369	8	3
PS	ASTR	600	3,000	67	7	578	2,890	64	8	-22	-110	-2	1
	CHEM	757	6,117	136	29	735	6,003	133	29	-22	-114	-3	0
	EDUC					3	12	0	1	3	12	0	1
	ENGR	98	700	16	3	67	488	11	3	-31	-212	-5	0
	GEOL	119	893	20	4	106	795	18	4	-13	-98	-2	0
	MATH	4,980	25,679	571	143	5,121	26,479	589	151	141	800	18	8
	MET	229	861	19	5	262	980	22	5	33	119	3	0
	PHYS	419	2,803	62	15	462	3,019	67	16	43	216	5	1
	PSME					5	20	0	1	5	20	0	1
	Total	7,202	40,053	890	206	7,339	40,686	904	218	137	634	14	12
SE	GUID	180	514	11	10	183	474	11	9	3	-40	-1	-1
	PEA	467	1,448	32	24	473	1,712	38	25	6	264	6	1
	SIGN	139	695	15	4	138	690	15	4	-1	-5	-0	0
	SPED	374	8,267	184	15	374	8,179	182	15	0	-88	-2	0

		2007W				2008W				Increase			
		01/23/07 06:05 AM				01/23/08 06:05 AM							
		Crse Enr	Est Wsch	Est FTES	Num Sec	Crse Enr	Est Wsch	Est FTES	Num Sec	Crse Enr	Est Wsch	Est FTES	Num Sec
	Total	1,160	10,923	243	53	1,168	11,054	246	53	8	132	3	0
SS	ADMJ	385	1,787	40	24	384	1,757	39	25	-1	-30	-1	1
	ANTH	923	4,090	91	19	948	4,285	95	22	25	195	4	3
	C D	869	4,817	107	37	1,052	5,684	126	43	183	867	19	6
	ECON	1,155	4,620	103	26	1,298	5,192	115	32	143	572	13	6
	GEO	284	1,136	25	6	328	1,312	29	9	44	176	4	3
	HIST	1,588	7,430	165	43	1,638	7,619	169	49	50	190	4	6
	HUMI	743	2,972	66	19	819	3,276	73	24	76	304	7	5
	PARA	420	1,705	38	21	423	1,781	40	22	3	76	2	1
	PHIL	685	2,910	65	20	767	3,198	71	21	82	288	6	1
	POLI	913	3,652	81	19	901	3,604	80	22	-12	-48	-1	3
	POST	32	107	2	1					-32	-107	-2	-1
	PSYC	1,444	5,920	132	34	1,546	6,271	139	35	102	351	8	1
	SOC	721	2,884	64	17	671	2,684	60	17	-50	-200	-4	0
	SOSC	30	257	6	5	43	347	8	7	13	90	2	2
	Total	10,192	44,286	984	291	10,818	47,010	1,045	328	626	2,724	61	37
ST	CLP	112	408	9	5	97	388	9	4	-15	-20	-0	-1
	COUN	159	159	4	5	152	171	4	7	-7	12	0	2
	HUMA	739	2,956	66	17	690	2,760	61	16	-49	-196	-4	-1
	Total	1,010	3,523	78	27	939	3,319	74	27	-71	-204	-5	0

**Resident Only, Job Corps Not Included**

**Enrollment Status**

De Anza College

	2007W		2008W		Increase		% Increase	
	Jan 23 2007		Jan 23 2008					
	HC	Est Wsch	HC	Est Wsch	HC	Est Wsch	HC	Est Wsch
1 First-time Student	367	3,599	374	3,772	7	173	2%	5%
2 First-time Transfer Student	1,340	11,002	1,322	11,269	-18	267	-1%	2%
3 Returning Student	2,706	22,009	2,321	18,940	-385	-3,069	-14%	-14%
5 Continuing Student	13,205	178,552	14,073	190,492	868	11,939	7%	7%
Y K-12 Special Admit	515	4,263	525	4,254	10	-9	2%	-0%
Total	18,133	219,424	18,615	228,726	482	9,302	3%	4%

**Location / Zip Code Group**

De Anza College

	2007W		2008W		Increase		% Increase	
	HC	Est Wsch	HC	Est Wsch	HC	Est Wsch	HC	Est Wsch
	San Jose East of 880, Alviso, Milpitas, Fremont, Union City, Newark, Hayward, East Palo Alto	7,566	100,988	7,928	106,486	362	5,498	5%
Cupertino, Sunnyvale, Los Altos, Mountain View, Palo Alto, Los Gatos, Saratoga	5,779	63,330	5,773	63,769	-6	439	-0%	1%
San Jose Other, Santa Clara, Morgan Hill, Gilroy, Campbell	3,864	45,445	4,051	48,837	187	3,392	5%	7%
All Other Areas	924	9,662	863	9,634	-61	-28	-7%	-0%

**Student Type**

De Anza College

	2007W		2008W		Increase		% Increase	
	HC	Est Wsch	HC	Est Wsch	HC	Est Wsch	HC	Est Wsch
	F1 or FZ FHDA Visa Holders			1	15	1	15	
NonFHDA F Visa Holders			1	8	1	8		
Immigrants with an AP, AY, ASY, PA, PR, or RF Status	606	8,522	378	5,219	-228	-3,303	-38%	-39%
Other Visa Holders	932	10,226	947	10,475	15	250	2%	2%
US Citizens	16,595	200,677	17,288	213,009	693	12,332	4%	6%
Total	18,133	219,424	18,615	228,726	482	9,302	3%	4%

**Time of Day**

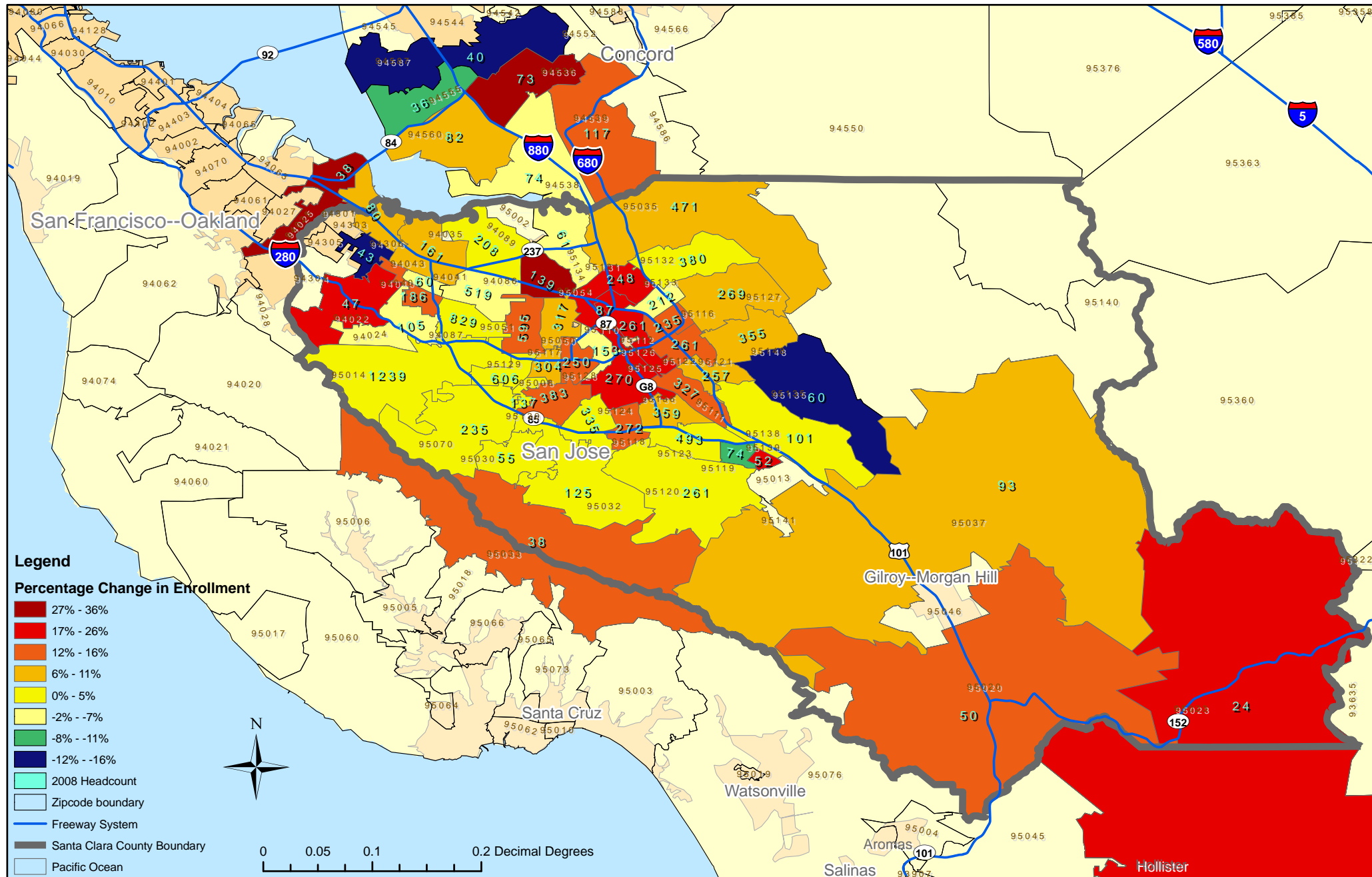
De Anza College

	2007W		2008W		Increase		% Increase	
	HC	Est Wsch	HC	Est Wsch	HC	Est Wsch	HC	Est Wsch
	Day Sections	14,343	167,336	14,899	175,939	556	8,603	4%
Evening Sections	8,248	52,089	8,423	52,787	175	699	2%	1%



# Continuing Student HC Enrollment By Zip Code 2007W to 2008W Census

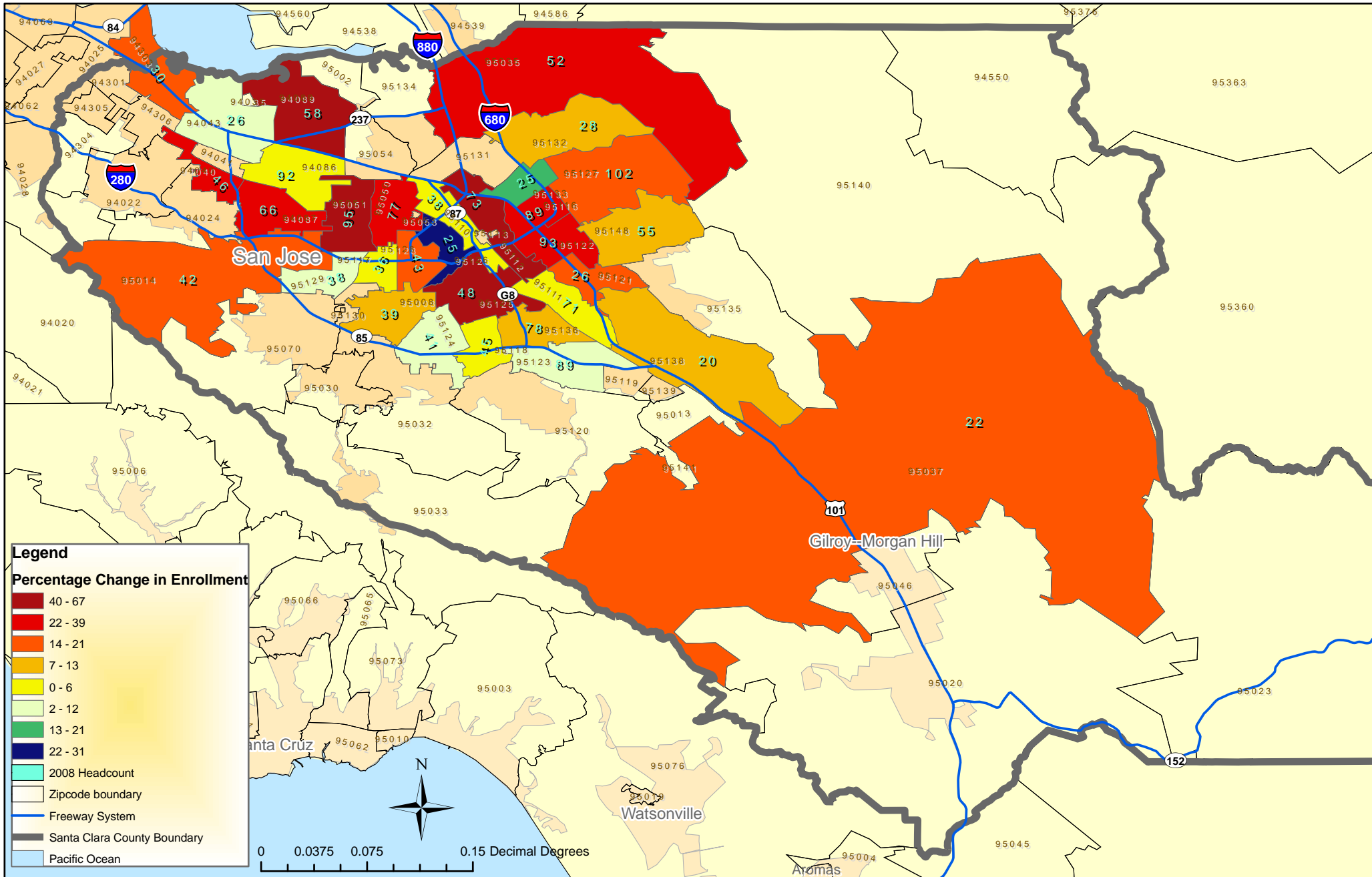
(Includes Only Residents and Zip Codes with Enrollment of 20 or more in 2008W; No Job Corps)



Source: Elena Litvinova, De Anza Research - February 2008

# Continuing Latino Student HC Enrollment By Zip Code 2007W to 2008W Census

(Includes Only Residents and Zip Codes with Enrollment of 20 or more in 2008W; No Job Corps)



Source: Elena Litvinova, De Anza Research - February 2008

### Estimated WSCH

RUN DATE: 24-Jan-08

### College Total-Distance Learning

2007W  
01/23/07 06:05 AM

2008W  
01/23/08 06:05 AM

% Increase

	Sections	Unduplicated Headcount	Est Wsch	Sections	Unduplicated Headcount	Est Wsch	Sections	Unduplicated Headcount	Est Wsch
DA	98	2,246	13,701	95	2,495	15,790	-3.06%	11.09%	15.24%

### By Division

	2007W				2008W			
	Sec	Crse Enr	Est Wsch	Est FTES	Sec	Crse Enr	Est Wsch	Est FTES
BH	14	310	1,333	30	13	324	1,414	31
CA	3	98	472	10	2	78	363	8
CB	36	1,077	5,019	112	34	1,221	6,001	133
IC	5	99	416	9	4	72	319	7
LA	12	306	1,732	38	14	407	2,418	54
LB	3	32	64	1	3	39	78	2
PE					1	29	58	1
PS	2	85	425	9	2	79	395	9
SS	21	913	4,121	92	20	980	4,618	103
ST	2	56	119	3	2	54	126	3

	All Sections			
	2007W		2008W	
	FTEF	Est Prod	FTEF	Est Prod
BH	1.6	812	1.6	861
CA	0.5	965	0.5	742
CB	8.4	598	8.9	671
IC	1.2	347	0.9	354
LA	4.3	398	5.2	467
LB	0.3	192	0.3	234
PE			0.1	435
PS	0.7	638	0.7	593
SS	5.3	782	4.9	936
ST	0.3	369	0.3	391
Total	22.7	605	23.5	671

Section Count includes only sections with registered students. FTEF and Productivity includes all sections.

### Estimated WSCH

## Distance Learning Sections By Division

2007W			2008W			% Increase		
01/23/07 06:05 AM			01/23/08 06:05 AM					

		NUM STU	Num Sections	Estimated Wsch	NUM STU	Num Sections	Estimated Wsch	NUM STU	Num Sections	Estimated Wsch	
DA	Biological & Health Sciences	BIOL010.63Z	27	1	216	32	1	256	19%	0%	19%
		BIOL054G63Z	28	1	98				-100%	-100%	-100%
		BIOL054H63Z	28	1	98				-100%	-100%	-100%
		BIOL054I63Z				30	1	105			
		BIOL054J63Z				29	1	102			
		HLTH021.63Z	43	1	215	43	1	215	0%	0%	0%
		HTEC050.63Z	41	1	123	39	1	117	-5%	0%	-5%
		HTEC050.65Z	27	1	81	29	1	87	7%	0%	7%
		HTEC060A63Z	63	1	252	67	1	268	6%	0%	6%
		NUTR010.63Z	43	1	215	42	1	210	-2%	0%	-2%
	Subtotal	300	8	1,298	311	8	1,360	4%	0%	5%	
DA	Business /Computer Science	ACCT001A63Z	64	1	320	73	1	365	14%	0%	14%
		ACCT001B63Z	53	1	265	62	1	310	17%	0%	17%
		ACCT001C63Z	44	1	220	57	1	285	30%	0%	30%
		ACCT066.63Z	40	1	200	39	1	195	-3%	0%	-3%
		ACCT067A63Z	36	1	144	39	1	156	8%	0%	8%
		ARTS112I63Z	10	1	40				-100%	-100%	-100%
		ARTS113I63Z	6	1	24				-100%	-100%	-100%
		ARTS114A63Z				7	1	42			
		ARTS118A63Z	8	1	48				-100%	-100%	-100%
		BUS 010.63Z	61	1	305	71	1	355	16%	0%	16%
		BUS 018.63Z	57	1	285	61	1	305	7%	0%	7%
		BUS 054.63Z	46	1	230	40	1	200	-13%	0%	-13%
		BUS 055.63Z	38	1	190	39	1	195	3%	0%	3%
		BUS 060.63Z	39	1	195	53	1	265	36%	0%	36%
		BUS 067A63Z	3	1	12	8	1	32	167%	0%	167%
		BUS 070.63Z				27	1	108			
		BUS 085.63Z	30	1	90	26	1	78	-13%	0%	-13%
		BUS 090.63Z	42	1	210	46	1	230	10%	0%	10%
		BUS 096A63Z	42	1	210	49	1	245	17%	0%	17%
		CAOS108.63Z	11	1	44	13	1	52	18%	0%	18%
		CAOS112I63Z	24	1	96				-100%	-100%	-100%
		CAOS113I63Z	20	1	80				-100%	-100%	-100%
		CAOS114A63Z	18	1	108	18	1	108	0%	0%	0%
		CAOS118A63Z	10	1	60				-100%	-100%	-100%
		CAOS173.63Z	8	1	16	16	1	32	100%	0%	100%
		CAOS70AA63Z	45	1	135	33	1	99	-27%	0%	-27%
		CAOS90GA63Z	17	1	68	29	1	116	71%	0%	71%
		CAOS91AL63Z	28	1	112				-100%	-100%	-100%
		CAOS93AL63Z	29	1	116				-100%	-100%	-100%
		CIS 002.63Z	33	1	132	41	1	164	24%	0%	24%
CIS 003.63Z				58	1	406					

2007W			2008W			% Increase		
01/23/07 06:05 AM			01/23/08 06:05 AM					

	NUM STU	Num Sections	Estimated Wsch	NUM STU	Num Sections	Estimated Wsch	NUM STU	Num Sections	Estimated Wsch
CIS 018A63Z	22	1	132	40	1	240	82%	0%	82%
CIS 018B63Z				27	1	162			
CIS 035A63Z	35	1	210	32	1	192	-9%	0%	-9%
CIS 064B63Z	32	1	192	32	1	192	0%	0%	0%
CIS 064C63Z				22	1	132			
CIS 075A63Z	20	1	100	19	1	95	-5%	0%	-5%
CIS 089A63Z				39	1	195			
CIS 089C63Z				24	1	120			
CIS 108.63Z	15	1	60	29	1	116	93%	0%	93%
CIS 170D63Z	24	1	96				-100%	-100%	-100%
PARA018.63Z	6	1	30	6	1	30	0%	0%	0%
REST050.63Z	61	1	244	46	1	184	-25%	0%	-25%
Subtotal	1,077	36	5,019	1,221	34	6,001	13%	-6%	20%
Creative Arts									
ARTS114A63Z	14	1	84				-100%	-100%	-100%
MUSI001.63Z	52	1	260	51	1	255	-2%	0%	-2%
PHTG058.63Z	32	1	128	27	1	108	-16%	0%	-16%
Subtotal	98	3	472	78	2	363	-20%	-33%	-23%
Intercultural/International Studies									
ICS 007.63Z	18	1	72	8	1	32	-56%	0%	-56%
ICS 010.63Z	20	1	100	31	1	155	55%	0%	55%
ICS 011.63Z	31	1	124	29	1	116	-6%	0%	-6%
ICS 020.63Z	23	1	92				-100%	-100%	-100%
SPCH007.63Z	7	1	28	4	1	16	-43%	0%	-43%
Subtotal	99	5	416	72	4	319	-27%	-20%	-23%
Language Arts									
ELIT010.63Z	38	1	152				-100%	-100%	-100%
EWRT001A63Z	36	1	216	26	1	156	-28%	0%	-28%
EWRT001A65Z	19	1	114	21	1	126	11%	0%	11%
EWRT001A66Z	22	1	132	34	1	204	55%	0%	55%
EWRT001A67Z				27	1	162			
EWRT001A68Z				33	1	198			
EWRT001B63Z	21	1	126	28	1	168	33%	0%	33%
EWRT001B65Z	25	1	150	32	1	192	28%	0%	28%
EWRT001B66Z	21	1	126	31	1	186	48%	0%	48%
EWRT001B67Z	23	1	138	32	1	192	39%	0%	39%
EWRT002.63Z	21	1	126	33	1	198	57%	0%	57%
EWRT002.65Z	21	1	126	28	1	168	33%	0%	33%
EWRT002.66Z	31	1	186	30	1	180	-3%	0%	-3%
EWRT002.67Z				28	1	168			
JOUR002.63Z	28	1	140	24	1	120	-14%	0%	-14%
Subtotal	306	12	1,732	407	14	2,418	33%	17%	40%
Library									
LCEN050.63Z	14	1	28	14	1	28	0%	0%	0%
LCEN051.63Z	5	1	10	14	1	28	180%	0%	180%
LCEN053.63Z	13	1	26	11	1	22	-15%	0%	-15%
Subtotal	32	3	64	39	3	78	22%	0%	22%
Physical Education									
P E 070A63Z				29	1	58			
Subtotal				29	1	58			
Physical Sci/Math/									
MATH010.63Z	46	1	230	46	1	230	0%	0%	0%

2007W			2008W			% Increase	
01/23/07 06:05 AM			01/23/08 06:05 AM				

		NUM STU	Num Sections	Estimated Wsch	NUM STU	Num Sections	Estimated Wsch	NUM STU	Num Sections	Estimated Wsch
Engineering	MATH114.63Z	39	1	195	33	1	165	-15%	0%	-15%
	Subtotal	85	2	425	79	2	395	-7%	0%	-7%
Social Sci/Hum anities	ANTH002.63Z	40	1	200	44	1	220	10%	0%	10%
	C D 010G63Z	34	1	238	46	1	322	35%	0%	35%
	C D 010H63Z	32	1	224	63	1	441	97%	0%	97%
	ECON001.63Z	42	1	168	43	1	172	2%	0%	2%
	ECON002.63Z	53	1	212	55	1	220	4%	0%	4%
	HIST003B63Z	26	1	104	33	1	132	27%	0%	27%
	HIST017A63Z	29	1	145	29	1	145	0%	0%	0%
	HIST017A65Z	39	1	195	59	1	295	51%	0%	51%
	HIST017B63Z	46	1	230	49	1	245	7%	0%	7%
	HIST017C63Z	75	1	375	61	1	305	-19%	0%	-19%
	HUMI015.63Z	82	1	328	107	1	428	30%	0%	30%
	HUMI016.63Z	49	1	196				-100%	-100%	-100%
	ICS 003B63Z	16	1	64	17	1	68	6%	0%	6%
	PHIL001.63Z	48	1	192	41	1	164	-15%	0%	-15%
	POLI001.63Z	53	1	212	39	1	156	-26%	0%	-26%
	PSYC001.63Z	54	1	216	63	1	252	17%	0%	17%
	PSYC004.63Z	42	1	168	34	1	136	-19%	0%	-19%
	PSYC010G63Z	7	1	49	26	1	182	271%	0%	271%
	PSYC010H63Z	7	1	49	17	1	119	143%	0%	143%
	PSYC014.63Z	58	1	232	68	1	272	17%	0%	17%
SOC 001.63Z	81	1	324	86	1	344	6%	0%	6%	
Subtotal	913	21	4,121	980	20	4,618	7%	-5%	12%	
Student Services	CLP 070.63Z	21	1	84	24	1	96	14%	0%	14%
	COOP050.63Z				1	1	1			
	COOP050X63Z				1	1	2			
	COOP050Y63Z				1	1	3			
	COOP050Z63Z	3	1	12	8	1	32	167%	0%	167%
	COOP051X63Z	1	1	4				-100%	-100%	-100%
	COOP051Z63Z	1	1	8	2	1	16	100%	0%	100%
	COOP070.63Z	1	1	1				-100%	-100%	-100%
	COOP070X63Z	2	1	4				-100%	-100%	-100%
	COOP070Y63Z	2	1	6				-100%	-100%	-100%
	COUN100.63Z	35	1	35	30	1	30	-14%	0%	-14%
	Subtotal	66	8	154	67	7	180	2%	-13%	17%
Total		2,976	98	13,701	3,283	95	15,790	10%	-3%	15%

## Resident Credit and NonCredit FTES

<u>De Anza</u>	2006	2007	Change
Summer	2,758.99	2,499.09	-9.42%
Fall	5,865.85	6,156.18	4.95%
Total	8,624.84	8,655.27	0.35%
<u>Foothill</u>			
Summer	1,999.08	2,099.06	5.00%
Fall	4,111.11	4,106.04	-0.12%
Total	6,110.19	6,205.10	1.55%
<u>District</u>			
Summer	4,758.07	4,598.15	-3.36%
Fall	9,976.96	10,262.22	2.86%
Total	14,735.03	14,860.37	0.85%

Source: Bob Barr spreadsheet to Bernata Slater  
1/11/2008

**Highlights**  
**Enrollment Indicators Report**  
**Census Day, Winter 2007 vs. Winter 2008**

The following five tables display the Opening Day Enrollment Indicators Report for Winter 2008. Note: Registrations for Job Corps and non-credit classes are not always entered into the system on the same corresponding days for this year and last year.

The fourth page shows non-credit enrollment, which is significant at Foothill, when it is in, but much less so at De Anza. Non-credit enrollment and WSCH appear to be largely in for both last year and this year at this point.

Job Corps enrollments are included for both this and last year.

Highlights from the tables of findings:

- De Anza's overall WSCH is up 4.7% compared to the corresponding point last year. Foothill's is up 1.0%.
- Headcount is up less than WSCH at De Anza but up more than WSCH at Foothill.
- Weekly Census class WSCH is up by 4.4% at De Anza and is up 1.4% at Foothill.
- Non-residents are up again this quarter compared to last Winter, by 8.6% at De Anza and by 8.8% at Foothill.
- Resident only Weekly Census class WSCH is up 3.8% at De Anza and is up 0.2% at Foothill.
- Non-credit apportionment WSCH appears to be up substantially, about 20% for the district and it up at Foothill by about 12%. Again, some caution is needed as some non-credit data for either year may not yet be in at this point.
- The fifth and last table provides a breakdown of total credit and noncredit Estimated FTES by division. Job Corps data is included this time and is up 4% at this point. All divisions are up at De Anza except Student Services.
- At Foothill, all divisions are up except three: Biological & Health Sciences, Guidance & Counseling, and PSME. Credit enrollment in Adaptive Learning is down but not credit enrollment is up for not net gain.
- When final numbers are available, Foothill should have about 4,000 FTES and De Anza about 6,000 FTES or a total of 10,000 FTES for Winter. This table shows a total of 9,714 FTES as of Opening Day. Thus, about 300 FTES has yet to come in late start or positive attendance classes.



## Enrollment Indicators Report Census Day, Winter 2007 vs. Winter 2008

(Excludes Non-credit and Apprenticeship classes)

Registration thru Monday Jan 22 2007 for Winter 2007 and thru Tuesday Jan 22 2008 for Winter 2008

### Section, Headcount, and WSCH Totals

College	2007W			2008W			Increase			% Increase		
	Sections	Hdcnt	WSCH	Sections	Hdcnt	WSCH	Sections	Hdcnt	WSCH	Sections	Hdcnt	WSCH
DA	2,159	21,503	272,528	2,277	21,983	285,235	118	480	12,708	5.5%	2.2%	4.7%
FH	1,408	11,603	143,404	1,429	11,843	144,859	21	240	1,454	1.5%	2.1%	1.0%
District	3,567	33,106	415,932	3,706	33,826	430,094	139	720	14,162	3.9%	2.2%	3.4%

### Section, Headcount, and WSCH by Accounting Method

College/Acct Method		2007W			2008W			Increase			% Increase		
		Sections	Hdcnt	WSCH	Sections	Hdcnt	WSCH	Sections	Hdcnt	WSCH	Sections	Hdcnt	WSCH
DA	Daily Census	63	537	3,769	64	555	3,997	1	18	228	1.6%	3.4%	6.0%
	Positive Attnd	214	3,479	34,655	245	3,590	36,757	31	111	2,102	14.5%	3.2%	6.1%
	Wky Census	1,882	19,229	234,104	1,968	19,771	244,482	86	542	10,378	4.6%	2.8%	4.4%
FH	Daily Census	38	397	2,343	42	484	1,162	4	87	-1,181	10.5%	21.9%	-50.4%
	Positive Attnd	95	850	6,559	124	1,028	7,250	29	178	691	30.5%	20.9%	10.5%
	Wky Census	1,275	11,309	134,503	1,263	11,386	136,447	-12	77	1,944	-0.9%	0.7%	1.4%

### Headcount and WSCH by Resident/Non-resident Fee

College/Fee Type		2007W		2008W		Increase		% Increase	
		Hdcnt	WSCH	Hdcnt	WSCH	Hdcnt	WSCH	Hdcnt	WSCH
DA	Non-resident	1,669	28,771	1,766	31,256	97	2,485	5.8%	8.6%
	Resident	19,834	243,757	20,217	253,979	383	10,222	1.9%	4.2%
FH	Non-resident	967	17,503	1,029	19,052	62	1,548	6.4%	8.8%
	Resident	10,636	125,901	10,814	125,807	178	-94	1.7%	-0.1%
Dist	Non-resident	2,576	46,274	2,720	50,307	144	4,033	5.6%	8.7%
	Resident	29,834	369,658	30,344	379,786	510	10,128	1.7%	2.7%

Note: WSCH is estimated WSCH, i.e., it assumes positive attendance students attend all sessions. Not all sections may be entered, especially positive attendance sections. Section count is only of sections with currently active enrollment. Noncredit enrollment is not included.

[Extract Dates: Jan 23 2007, Jan 23 2008]

FHDA IR&P 01/24/08

## Enrollment Indicators Report - Residents Only

### Census Day, Winter 2007 vs. Winter 2008

(Excludes Non-credit and Apprenticeship classes)

Registration thru Monday Jan 22 2007 for Winter 2007 and thru Tuesday Jan 22 2008 for Winter 2008

#### Section, Headcount, and WSCH Totals

College	2007W			2008W			Increase			% Increase		
	Sections	Hdcnt	WSCH	Sections	Hdcnt	WSCH	Sections	Hdcnt	WSCH	Sections	Hdcnt	WSCH
DA	2,156	19,834	243,757	2,261	20,217	253,979	105	383	10,222	4.9%	1.9%	4.2%
FH	1,391	10,636	125,901	1,411	10,814	125,807	20	178	-94	1.4%	1.7%	-0.1%
District	3,547	30,470	369,658	3,672	31,031	379,786	125	561	10,128	3.5%	1.8%	2.7%

#### Section, Headcount, and WSCH by Accounting Method

College/Acct Method		2007W			2008W			Increase			% Increase		
		Sections	Hdcnt	WSCH	Sections	Hdcnt	WSCH	Sections	Hdcnt	WSCH	Sections	Hdcnt	WSCH
DA	Daily Census	63	482	3,599	64	516	3,833	1	34	234	1.6%	7.1%	6.5%
	Positive Attnd	213	3,348	34,082	243	3,436	36,191	30	88	2,109	14.1%	2.6%	6.2%
	Wky Census	1,880	17,577	206,076	1,954	18,019	213,956	74	442	7,880	3.9%	2.5%	3.8%
FH	Daily Census	37	313	2,106	40	394	1,024	3	81	-1,082	8.1%	25.9%	-51.4%
	Positive Attnd	93	780	5,928	124	946	6,726	31	166	799	33.3%	21.3%	13.5%
	Wky Census	1,261	10,347	117,867	1,247	10,365	118,056	-14	18	189	-1.1%	0.2%	0.2%

Note: WSCH is estimated WSCH, i.e., it assumes positive attendance students attend all sessions. Not all sections may be entered, especially positive attendance sections. Section count is only of sections with currently active enrollment. Noncredit enrollment is not included.

[Extract Dates: Jan 23 2007, Jan 23 2008]

FHDA IR&P 01/24/08

## Enrollment Indicators Report - Non-residents Only Census Day, Winter 2007 vs. Winter 2008

(Excludes Non-credit and Apprenticeship classes)

Registration thru Monday Jan 22 2007 for Winter 2007 and thru Tuesday Jan 22 2008 for Winter 2008

### Section, Headcount, and WSCH Totals

College	2007W			2008W			Increase			% Increase		
	Sections	Hdcnt	WSCH	Sections	Hdcnt	WSCH	Sections	Hdcnt	WSCH	Sections	Hdcnt	WSCH
DA	1,497	1,669	28,771	1,565	1,766	31,256	68	97	2,485	4.5%	5.8%	8.6%
FH	797	967	17,503	820	1,029	19,052	23	62	1,548	2.9%	6.4%	8.8%
District	2,294	2,636	46,274	2,385	2,795	50,307	91	159	4,033	4.0%	6.0%	8.7%

### Section, Headcount, and WSCH by Accounting Method

College/Acct Method		2007W			2008W			Increase			% Increase		
		Sections	Hdcnt	WSCH	Sections	Hdcnt	WSCH	Sections	Hdcnt	WSCH	Sections	Hdcnt	WSCH
DA	Daily Census	35	55	170	41	39	164	6	-16	-6	17.1%	-29.1%	-3.7%
	Positive Attn	81	131	573	86	154	566	5	23	-7	6.2%	17.6%	-1.1%
	Wky Census	1,381	1,652	28,028	1,438	1,752	30,526	57	100	2,498	4.1%	6.1%	8.9%
FH	Daily Census	14	84	236	14	90	138	0	6	-99	0.0%	7.1%	-41.8%
	Positive Attn	35	70	631	32	82	523	-3	12	-108	-8.6%	17.1%	-17.1%
	Wky Census	748	962	16,636	774	1,021	18,391	26	59	1,755	3.5%	6.1%	10.5%

Note: WSCH is estimated WSCH, i.e., it assumes positive attendance students attend all sessions. Not all sections may be entered, especially positive attendance sections. Section count is only of sections with currently active enrollment. Noncredit enrollment is not included.

[Extract Dates: Jan 23 2007, Jan 23 2008]

FHDA IR&P 01/24/08

## Enrollment Indicators Report - Non-credit Only Census Day, Winter 2007 vs. Winter 2008

(Excludes Apprenticeship classes)

Registration thru Monday Jan 22 2007 for Winter 2007 and thru Tuesday Jan 22 2008 for Winter 2008

### Section, Headcount, and WSCH Totals

College	2007W			2008W			Increase			% Increase		
	Sections	Hdcnt	WSCH	Sections	Hdcnt	WSCH	Sections	Hdcnt	WSCH	Sections	Hdcnt	WSCH
DA	36	728	1,608	48	700	2,330	12	-28	722	33.3%	-3.8%	44.9%
FH	85	1,200	4,987	99	1,332	5,607	14	132	620	16.5%	11.0%	12.4%
District	121	1,928	6,595	147	2,032	7,937	26	104	1,342	21.5%	5.4%	20.4%

### Section, Headcount, and WSCH by Accounting Method

College/Acct Method		2007W			2008W			Increase			% Increase		
		Sections	Hdcnt	WSCH	Sections	Hdcnt	WSCH	Sections	Hdcnt	WSCH	Sections	Hdcnt	WSCH
DA	Positive Attnd	36	728	1,608	47	690	2,288	11	-38	680	30.6%	-5.2%	42.3%
	Wky Census				1	14	42	1	14	42			
FH	Positive Attnd	85	1,200	4,987	99	1,332	5,607	14	132	620	16.5%	11.0%	12.4%

### Headcount and WSCH by Resident/Non-resident Fee

College/Fee Type		2007W		2008W		Increase		% Increase	
		Hdcnt	WSCH	Hdcnt	WSCH	Hdcnt	WSCH	Hdcnt	WSCH
DA	Non-resident	31	68	16	47	-15	-21	-48.4%	-30.9%
	Resident	697	1,540	684	2,283	-13	743	-1.9%	48.3%
FH	Non-resident	8	25	8	19	0	-6	0.0%	-24.0%
	Resident	1,192	4,962	1,324	5,588	132	626	11.1%	12.6%
Dist	Non-resident	39	93	24	66	-15	-27	-38.5%	-29.0%
	Resident	1,889	6,502	2,008	7,871	119	1,369	6.3%	21.1%

Note: WSCH is estimated WSCH, i.e., it assumes positive attendance students attend all sessions. Not all sections may be entered, especially positive attendance sections. Section count is only of sections with currently active enrollment.

[Extract Dates: Jan 23 2007, Jan 23 2008 ]

FHDA IR&P 01/24/08

**Enrollment Indicators Report**  
**Census, Winter 2007 vs. Winter 2008**  
**Estimated FTES by College, Division, & Job Corps**  
**Credit and Noncredit Classes**

			2007W	2008W	Increase	% Increase
	College	Division	Est FTES	Est FTES	Est FTES	Est FTES
All Others	DA	Applied Technologies	120.0	122.2	2.2	2%
		Biological, Health & Env Sciences	501.1	530.5	29.4	6%
		Business/Computer Science	657.1	707.3	50.1	8%
		Creative Arts	429.7	433.5	3.7	1%
		Intercultural/International Studies	353.8	368.4	14.6	4%
		Language Arts	1,015.6	1,096.8	81.3	8%
		Library	1.4	1.7	0.3	22%
		Physical Education	275.1	297.4	22.3	8%
		Physical Sci/Math/Engineering	890.3	903.7	13.4	2%
		Social Sci/Humanities	984.4	1,045.0	60.5	6%
		Special Education	242.8	245.7	2.9	1%
		Student Services	78.3	73.8	-4.5	-6%
		Total	5,549.7	5,825.9	276.2	5%
	FH	Adaptive Learning/Disabled Services	251.5	251.6	0.1	0%
		Biological & Health Sciences	606.4	590.8	-15.6	-3%
		Business & Social Sciences	541.6	549.1	7.5	1%
		Computers, Tech, & Info Systems	265.6	278.9	13.3	5%
		Economic Development	5.0	3.7	-1.2	-25%
		Fine Arts & Communication	421.1	436.7	15.6	4%
		Guidance/Counseling	27.2	26.0	-1.2	-5%
		Language Arts	419.8	420.6	0.8	0%
		Library	4.3	4.7	0.4	10%
		Physical Ed & Human Performance	281.5	291.7	10.1	4%
Physical Sci/Math/Engineering		477.5	470.5	-7.0	-1%	
Total	3,301.5	3,324.3	22.8	1%		
Total			8,851.2	9,150.2	299.0	3%
Job Corps	DA	Applied Technologies	543.9	563.4	19.5	4%
		Total	543.9	563.4	19.5	4%
	Total		543.9	563.4	19.5	4%
Total			9,395.1	9,713.6	318.5	3%