

**Examples of Data on the Success of
De Anza College Students**
*Prepared for the
Language Arts Developmental Task Force*

Andrew LaManque
(With thanks to Robert Barr)

Purpose / Goal

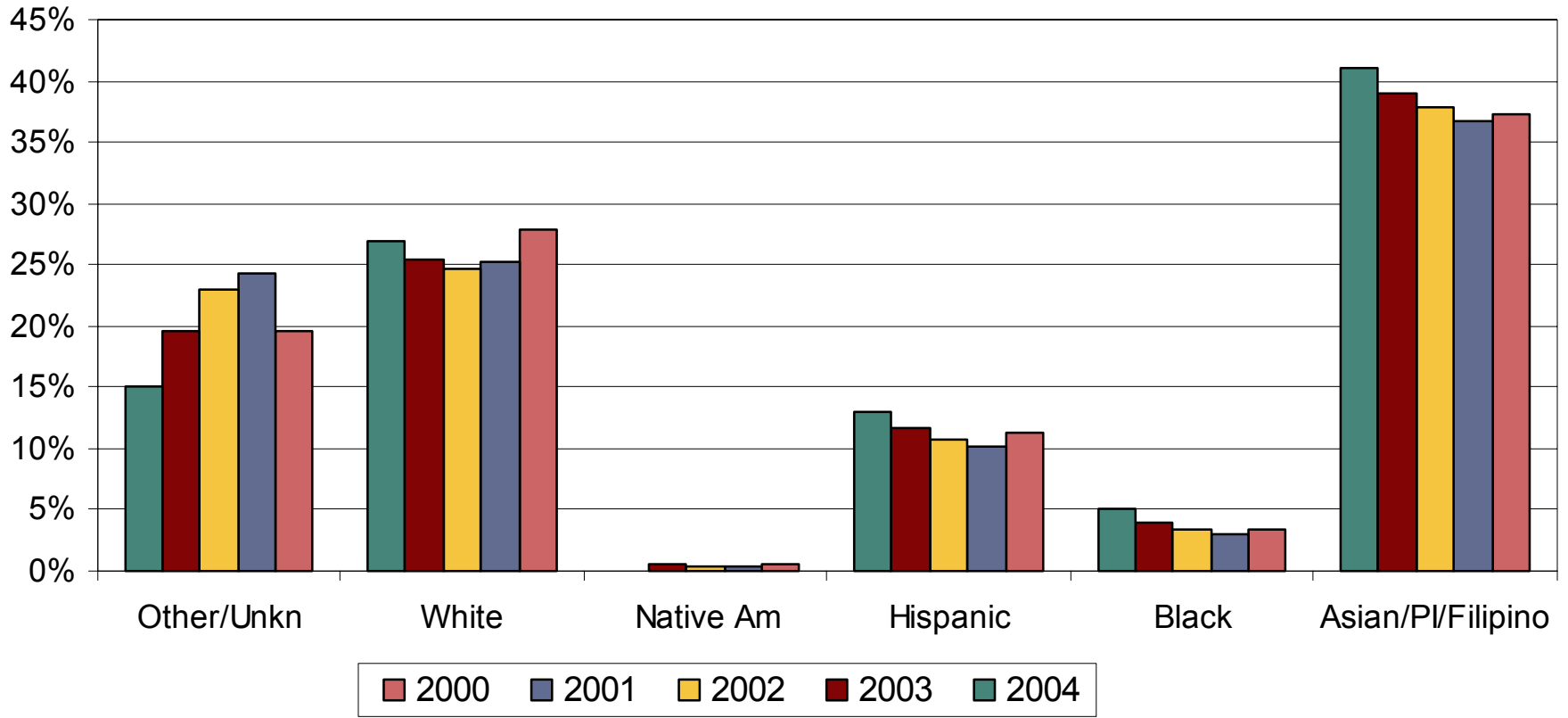
- The data that follows is a compilation of reports developed over the last 3 years.
 - Many of the graphs were developed by Bob Barr for the State of the College Report
- Hopefully the data will provide a foundation for some of the discussion later in the morning.
- Suggestions for future research are welcome!

Outline

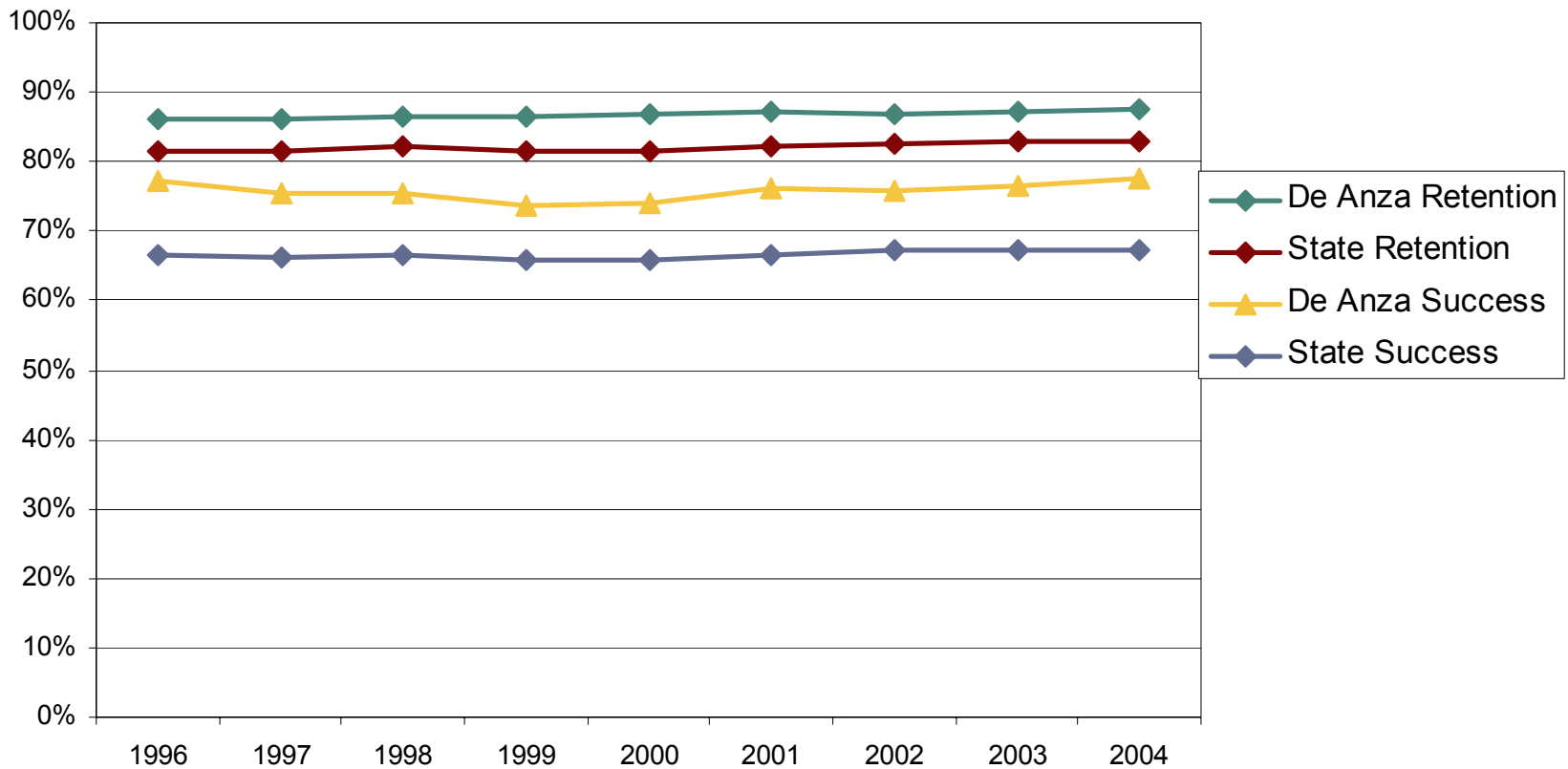
- College-wide data
 - Ethnic distribution of De Anza students
 - Course success compared to state average
 - Course success by ethnicity
 - Course success in Basic Skills and Transfer Courses
- EWRT Course Success Rates
 - Success by Basic Skills Course / Ethnicity
 - Tracking a cohort of students through a sequence of courses
- Miscellaneous Reports
 - Concurrent enrollments
 - Web based courses
 - LinC / LART 100
 - WAT

College-wide Data On Student Course Success

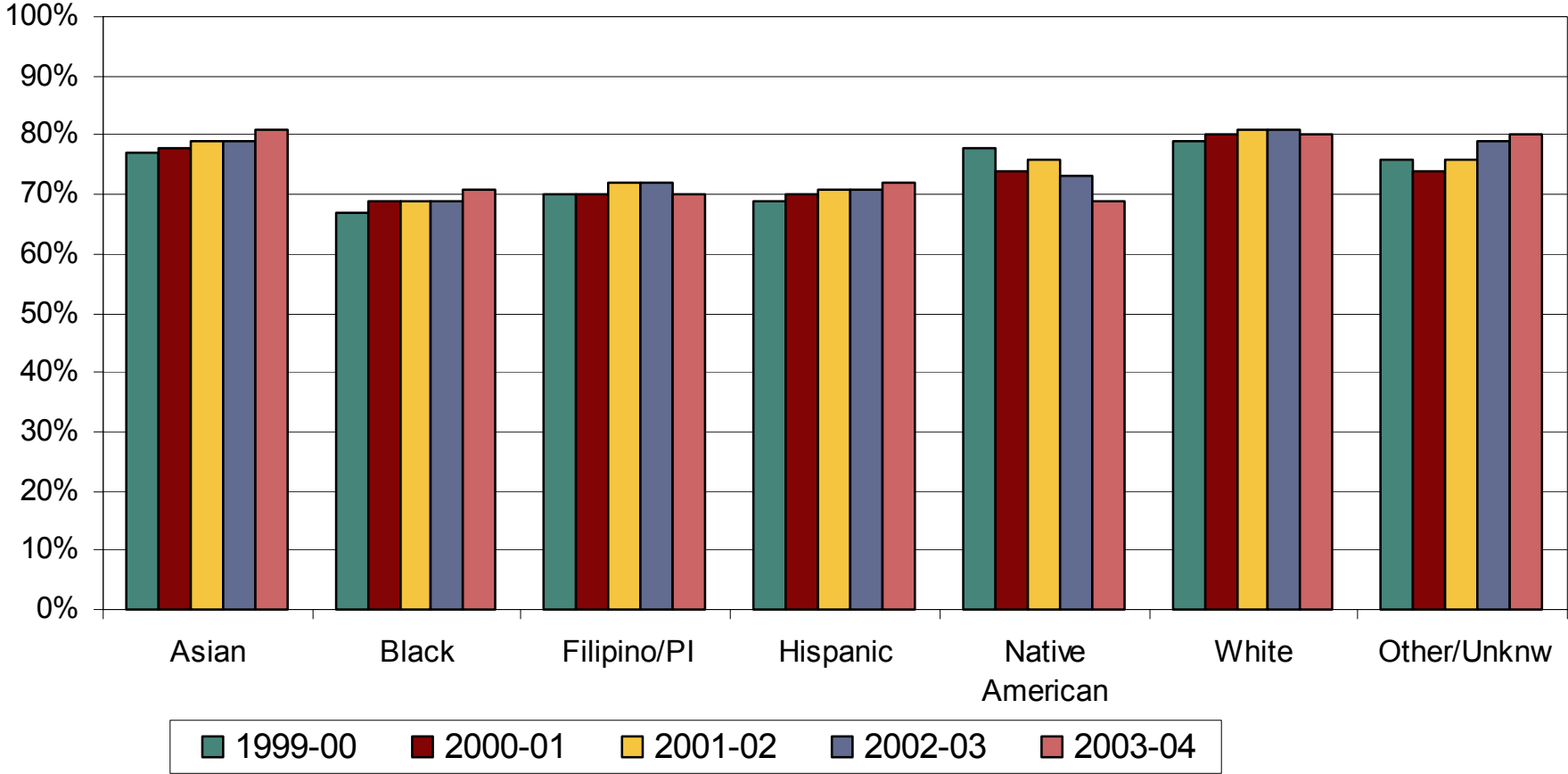
**De Anza College
Fall Headcount Percentage Distribution by Ethnicity
2000 to 2004**



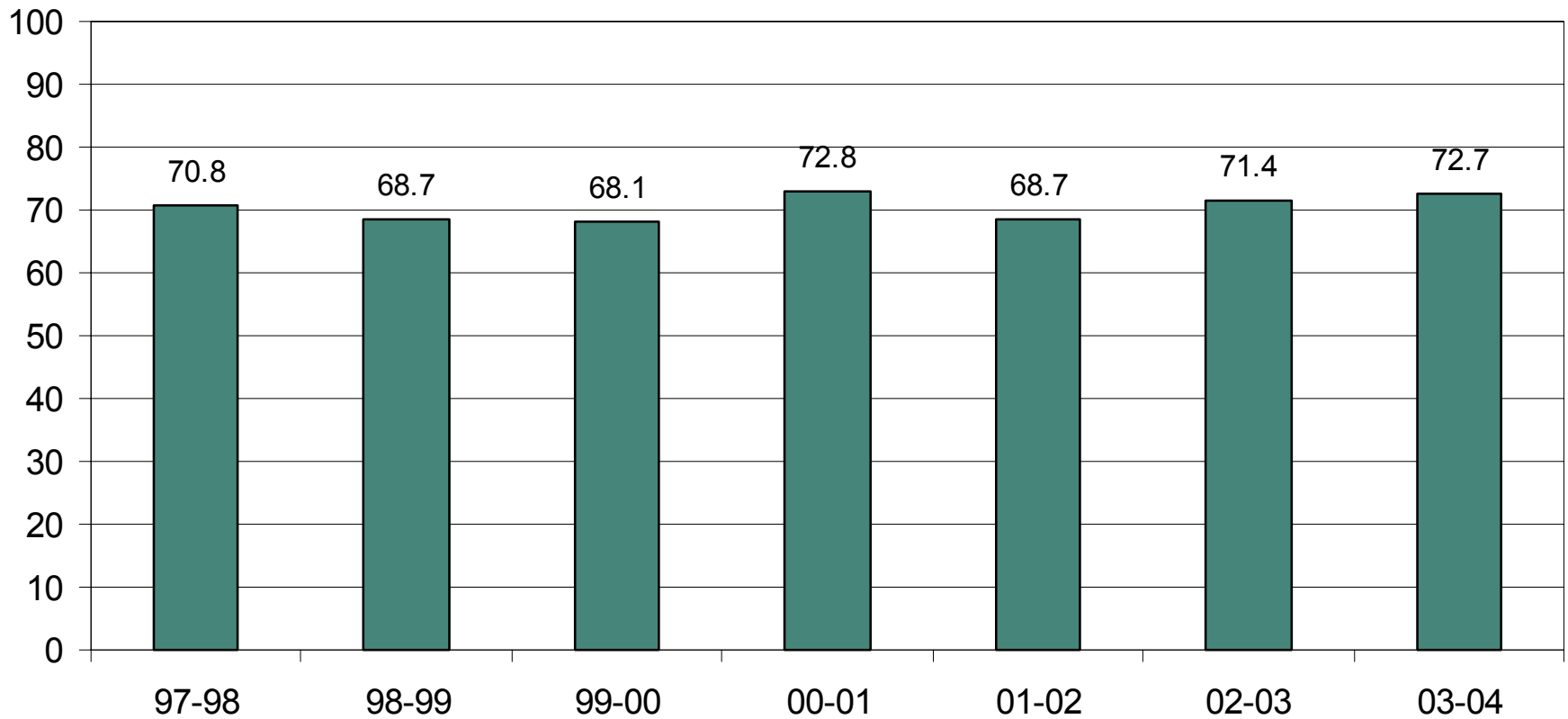
De Anza College Course Success and Retention Rates Compared to Statewide Average Fall 1996 to Fall 2004



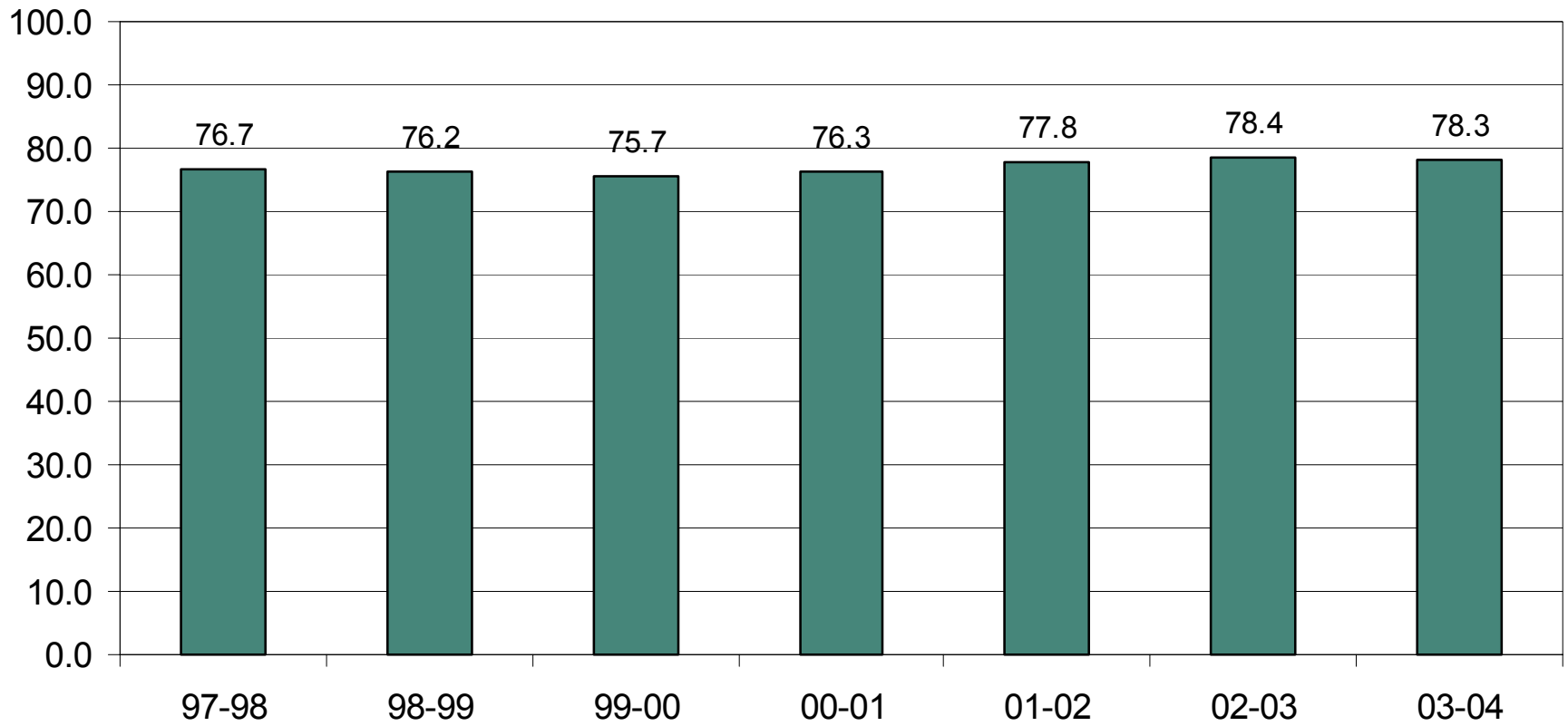
**De Anza College
1999-00 to 2003-04 Course Success Rates by Ethnicity**



**De Anza College
Percent Successful in Basic Skills Courses
1995-96 to 2003-04**

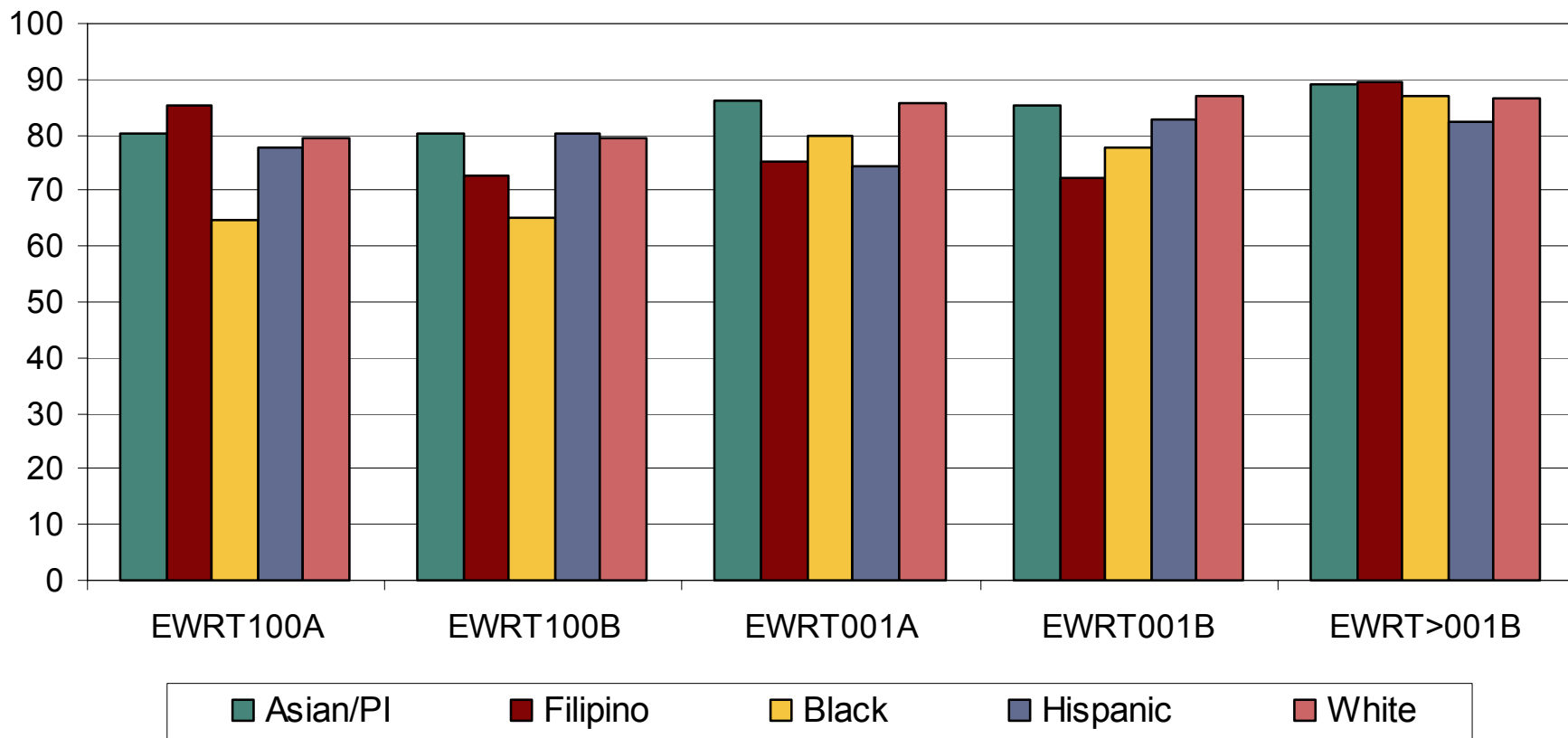


**De Anza College
Percent Successful in Transfer Courses
1995-96 to 2003-04**



EWRT Course Success Rates and Cohort Analyses

De Anza College
Course Success Rates in EWRT by Ethnicity
2000-01 Cohort Tracked to Summer 2003

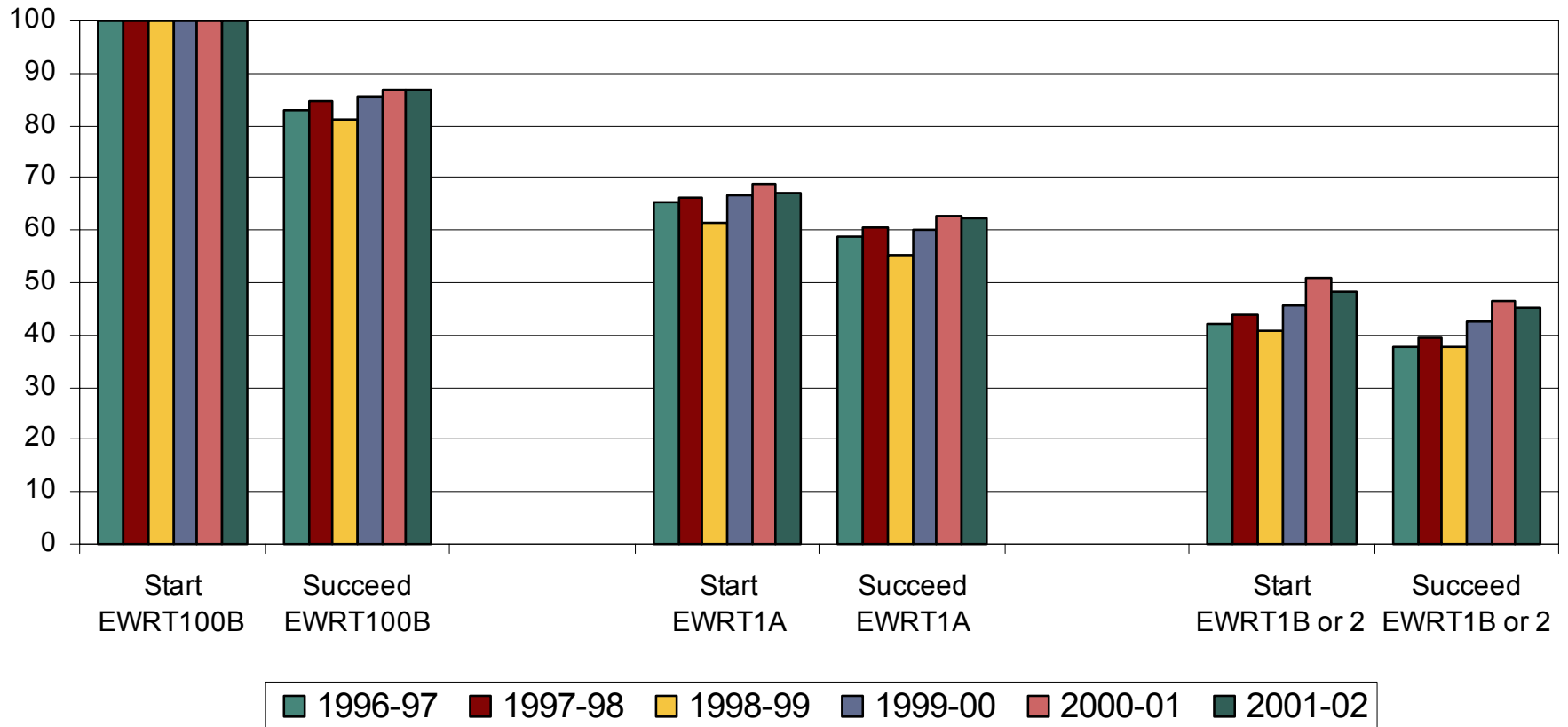


De Anza College
 Course Success Rates in EWRT by Ethnicity
 2000-01 Cohort Tracked to Summer 2003

Percentage of Total Grades to Summer 2003 by Ethnicity

Course	EWRT100A	EWRT100B	EWRT1A	EWRT1B	EWRT>1B
Asian/PI	45%	46%	47%	52%	52%
Filipino	9%	11%	8%	7%	5%
Black	9%	4%	3%	3%	2%
Hispanic	21%	17%	13%	11%	10%
White	16%	21%	29%	27%	29%
Native Am	1%	1%	1%	0%	2%
Total Grades	100%	100%	100%	100%	100%

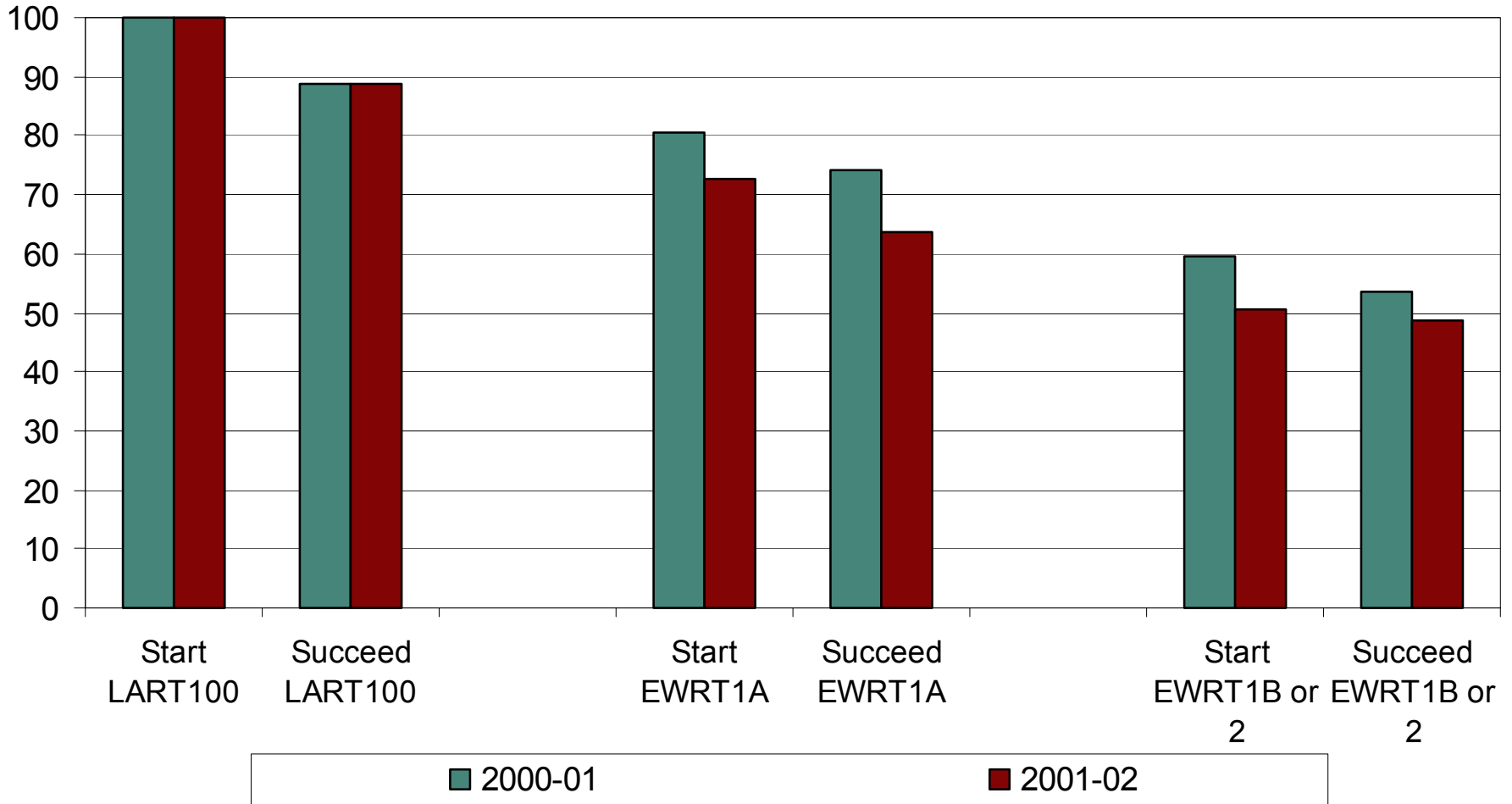
De Anza College Success Tracking of Students in English Starting in EWRT100B Cohorts of New Entering Students



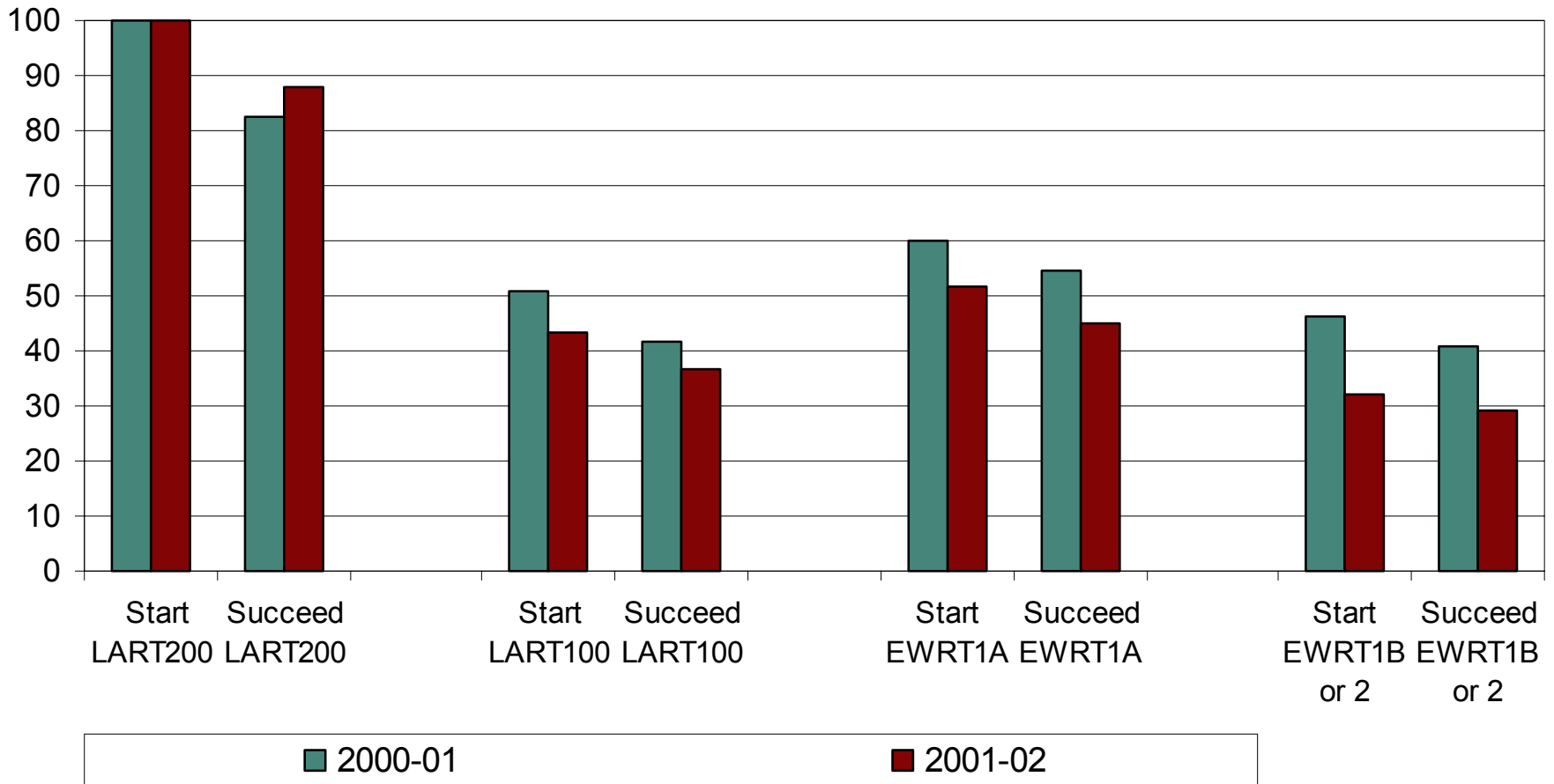
EWRT 100B Students at De Anza College
Three Year Course Success in EWRT1A

Cohort Term	Initial Grade in EWRT100B	EWRT100B			EWRT100B Student Success EWRT 1A Within Three Years		
		EWRT100B Cohort #	EWRT1A Cohort #	Students Attempting EWRT1A %	EWRT1A Cohort #	EWRT100B Cohort %	EWRT100B Cohort %
Fall 1997	Success	602	475	79%	434	91%	72%
	Non-Success	116	39	34%	34	87%	29%
	Withdrew	57	14	25%	11	79%	20%
	Total	775	528	68%	479	91%	62%
Fall 1998	Success	651	501	77%	451	90%	69%
	Non-Success	149	59	40%	49	83%	33%
	Withdrew	59	12	21%	11	92%	19%
	Total	859	572	67%	511	89%	60%
Fall 1999	Success	670	525	78%	475	90%	71%
	Non-Success	91	40	44%	37	93%	41%
	Withdrew	89	17	19%	13	76%	15%
	Total	850	582	68%	525	90%	62%
3 Term Total	Success	1923	1501	78%	1360	91%	71%
	Non-Success	356	138	39%	120	87%	34%
	Withdrew	205	43	21%	35	81%	17%
	Total	2484	1682	68%	1515	90%	61%

De Anza College
Success Tracking of Students in LART Starting in LART 100
Cohorts of New Entering Students



De Anza College
Success Tracking of Students in LART Starting in LART 200
Cohorts of New Entering Students



Miscellaneous Reports Involving EWRT Courses

De Anza College Fall 2002 Student Course Taking Patterns

	<u>Headcount</u>	<u>% of Crse</u>
EWRT100A	209	
Percent One Course Takers: 0%		
<u>Number of Students Also Taking</u> (largest enrollment)		
EWRT150	192	92%
LCEN500	78	37%
READ100	41	20%
READ101	40	19%
MATH105	34	16%
MATH200	27	13%
MATH101	26	12%

EWRT100B 935
Percent One Course Takers: 4%

Number of Students Also Taking
(largest enrollment)

EWRT160	811	87%
LCEN500	354	38%
READ100	198	21%
READ101	198	21%
MATH105	135	14%
MATH101	92	10%
MATH200	58	6%
PSYC001	51	5%
MATH051	41	4%
HUMA057	40	4%
POLI001	36	4%
HUMA010	34	4%
MATH 1A	29	3%
MATH010	29	3%

De Anza College

			De Anza College							
			<i>Pass</i>		<i>Did Not Pass</i>		<i>Withdrew</i>		Total	
			Num	Per	Num	Per	Num	Per	Num	Per
EWRT100A	2002F	Distance Section	57	45%	45	36%	24	19%	126	100%
		Traditional Section	393	78%	42	8%	69	14%	504	100%
	2003S	Distance Section	38	66%	8	14%	12	21%	58	100%
		Traditional Section	62	65%	8	8%	26	27%	96	100%
	2003F	Distance Section	42	49%	24	28%	20	23%	86	100%
		Traditional Section	268	74%	42	12%	54	15%	364	100%
EWRT100B	2002F	Distance Section	48	53%	16	18%	26	29%	90	100%
		Traditional Section	1,420	80%	200	11%	160	9%	1,780	100%
	2003W	Distance Section	129	64%	27	13%	45	22%	201	100%
		Traditional Section	1,194	77%	186	12%	165	11%	1,545	100%
	2003S	Distance Section	64	63%	22	22%	16	16%	102	100%
		Traditional Section	604	77%	62	8%	116	15%	782	100%
	2004F	Distance Section	34	41%	14	17%	34	41%	82	100%
		Traditional Section	1,344	81%	144	9%	168	10%	1,656	100%

Fall 2004

LART 100

		Pass		Did Not Pass		Withdrew		Total	
		Grades	Per	Grades	Per	Grades	Per	Grades	Per
EWRT100B	All Other Sections of Course	687	79%	81	9%	101	12%	869	100%
LART100.	LART100.01D	21	84%			4	16%	25	100%
	LART100.02D	22	92%	2	8%			24	100%
	LART100.03D	22	88%	1	4%	2	8%	25	100%
READ100.	All Other Sections of Course	421	80%	61	12%	45	9%	527	100%

Course Enrollment

		2004F					
		Pass		*Did Not Pass		TOTAL	
		HC	Percent	HC	Percent	HC	Percent
EWRT100B	PORTFOLIO STUDENT	181	78%	51	22%	232	100%
	NOT IN PILOT	506	79%	131	21%	637	100%
EWRT160.	PORTFOLIO STUDENT	179	74%	64	26%	243	100%
	NOT IN PILOT	469	71%	196	29%	665	100%
LART100.	PORTFOLIO STUDENT	44	90%	5	10%	49	100%
	NOT IN PILOT	21	84%	4	16%	25	100%
LART170.	PORTFOLIO STUDENT	19	86%	3	14%	22	100%
	NOT IN PILOT	5	56%	4	44%	9	100%
TOTAL		1,424	76%	458	24%	1,882	100%

End

- Questions / Suggestions?